



FUTURE PROOF YOUR CONNECTIONS



DataMax® Commercial Data Cable

The Strongest Link.



When you choose Quabbin® Wire and Cable you are not only selecting a premier cable, you are also investing in productivity and peace of mind. Quabbin® commercial cables offer the end user functionality and performance they can trust. Not only does DataMax® cable deliver fully compliant operational characteristics, it's so good it can enhance the overall performance of a subpar channel. For complete spec information and test data visit our website or contact a Quabbin® sales representative.

PROUDLY
MADE IN THE
U.S.A.



www.quabbin.com • (800) 368-3311

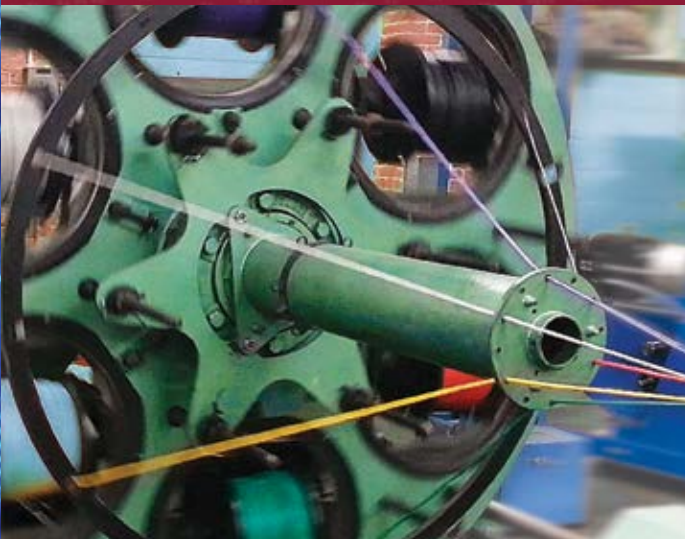
A computer network infrastructure is a significant investment.

DataMax® commercial data cables provide the best return on investment—now and in the future. Designed and manufactured to exceed industry standards, our cables offer outstanding electrical performance and reliability, are repetitive, consistent, and produce a higher yield rate making them the trusted choice of many institutions.

In addition to superior performance for the products of today, we focus on continual improvement and innovation to keep up with the rapidly changing technology and data demands of tomorrow. We effectively develop and deliver the best market solutions for all your commercial data needs — to *future proof your connections*.

- **DataMax® branded Ethernet Patch Cable**
- **Meets or exceeds all electrical performance of TIA 568-C**
- **Provides quick termination and high yield**
- **Stocked in a variety of constructions and colors**
- **Trusted by OEMs and assemblers**

CONTENTS



Multipair

2

Coaxial

5

Patch Cable

8

FAQs

21

Multipair Cables

DataMax® interconnect cable suitable for use in T1, E1, xDSL circuits and proudly made in the USA like all our products. By specifying a product that is made in America you are supporting the quality standards that are in place in American manufacturing. Many of our offshore competitors offer lower prices; however, the actual cost to the end user for choosing these cables could result in much more time and money spent in the end due to failures, poor performance and downtime. Eliminate failures tomorrow by selecting Quabbin today.

- **Switching**
- **Transmission Equipment**

Multipair Cables

T1, E1, xDSL

- » All parts contain a drain wire
 - » RoHs Compliant
 - » Parts 9719-9738 fit modular plug and comply with ANSI T1.202-1993 to 200m (650 ft.). Part 9770 to 160m (525 ft.)
- » Weight = WT./M', Nom., Net
 - » Voltage Rating Max 300V
 - » Bend Radius 8x smallest dimension
 - » Popular stocked parts listed below—see website for additional parts and spec information

| Part Number | Pair Count | Belden Equal | AWG | Copper | Shielded Pairs | Jacket Type | CMP | CMR | Color | Temp Max | Temp Min | Weight | Nom. OD |
|-------------|------------|--------------|-----|--------|----------------|-------------|-----|-----|-------|----------|----------|------------|--------------|
| 9719 | 2 | 7838A | 22 | Solid | X | PVC | | X | Gray | 75°C | -20°C | 35.12 lbs. | .178 x .315" |
| 9720 | 2 | | 22 | Solid | X | PVC | | X | Beige | 75°C | -20°C | 35.12 lbs. | .184 x .326" |
| 9722 | 2 | | 22 | Solid | X | PVC | | X | Red | 60°C | -20°C | 35.3 lbs. | .184 x .326" |
| 9738 | 2 | | 22 | Solid | X | ECTFE | X | | Gray | 150°C | -40°C | 27.0 lbs. | .169 x .308" |
| 9770 | 2 | | 24 | Solid | X | PVC | | X | Beige | 60°C | -20°C | 26.8 lbs. | .170 x .300" |

Compatible Connectors

| Quabbin P/N | Bel-Stewart Connector | Sentinel Connector |
|------------------------------|-----------------------|--------------------------------|
| 9719, 9720, 9722, 9738, 9770 | 940-SP-3088-0B | 110-080820-24 110S080820-24 |



Representative picture, may not match exact configuration of product.



LEARN MORE
quabbin.com/multipair
(800) 368-3311

Coaxial Cables

Quabbin offers DS-3 single coax and bundled configurations including zip constructions with a tracer. Quabbin also offers various RG type coaxial cables and equals.

Popular items Stocked—One of the things that makes Quabbin cables a great choice is the wide selection of IN STOCK items you have to choose from. Checking inventory is easier than ever too just visit our website and click on the inventory link to check on any of our stocked part numbers.

- **DataMax® double shielded Type 735A coaxial cable offerings suitable for DS-3 (T-3) circuits**
- **Additional coaxial offerings at www.quabbin.com**

Coaxial Cables

Coaxial

- » All 26 AWG Solid
 - » All PVC Jacket
 - » RoHs Compliant
 - » Weight = WT./M', Nom., Net
- » Usable in lengths up to 68m (225 ft.)
 - » Temp Rating Min -20°C
 - » Temp Rating Max 60°C
 - » Popular stocked parts listed below—see website for additional parts and spec information

| Part Number | Specific Description | Conductor Count | AWG | Copper | Shield | Braid | CMR | Voltage Max | Weight | Bend Radius | Nom. OD |
|-------------|----------------------|---------------------------|-----|--------|--------|-------|-----|-------------|------------|------------------------|--------------|
| 2700 | DS-3 | 3 | 26 | Solid | X | X | X | 300 | 51.7 lbs. | 10x OD | .321" |
| 2701 | DS-3 | 2 (coax + 22AWG tracer) | 26 | Solid | X | X | X | 300 | 14.7 lbs. | 10x smallest dimension | .131 x .201" |
| 2702 | DS-3 | 2 | 26 | Solid | X | X | X | 300 | 23.2 lbs. | 10x smallest dimension | .131 x .262" |
| 2703 | DS-3 | 3 (2 coax + 22AWG tracer) | 26 | Solid | X | X | X | 300 | 24.9 lbs. | 10x smallest dimension | .131 x .322" |
| 2706 | DS-3 | 6 | 26 | Solid | X | X | X | 300 | 92.5 lbs. | 10x OD | .432" |
| 2708 | DS-3 | 8 | 26 | Solid | X | X | X | 300 | 119.2 lbs. | 10x OD | .489" |
| 2709 | DS-3 | 9 | 26 | Solid | X | X | X | 300 | 134.3 lbs. | 10x OD | .525" |
| 2712 | DS-3 | 12 | 26 | Solid | X | X | X | 300 | 175.3 lbs. | 10x OD | .576" |
| 2716 | DS-3 | 16 | 26 | Solid | X | X | X | 300 | 223.3 lbs. | 10x OD | .664" |
| 2724 | DS-3 | 24 | 26 | Solid | X | X | X | 300 | 326.3 lbs. | 10x OD | .827" |
| 2735 | DS-3 | 1 | 26 | Solid | X | X | X | 300 | 11.58 lbs. | 10x OD | .131" |



Representative picture, may not match exact configuration of product.



LEARN MORE
quabbin.com/coaxial
(800) 368-3311

DataMax® Commercial Ethernet Patch Cable

DataMax® Commercial Ethernet Patch Cables offer outstanding electrical performance and reliability. Each cable is tested on everything from color to conductivity to ensure they meet the highest quality standards. In addition to the testing that takes place in-house, Quabbin also works closely with OEM's, Assemblers, and Connector Manufacturers to effectively develop and deliver the best market solutions for all your commercial data needs.



- Meets TIA 568-C*
- Quick Termination & High Yield
- Compatible with popular plugs
- High performance tinned copper
- #1 choice for datacenter and patching applications
- Inline manufacturing monitoring
- Suitable for "component compliant" assemblies
- Designed with premium components/materials
- Spooled with minimal handling and no abuse
- Designed and manufactured in the same facility

Patch cable so good it can lend its headroom to a subpar channel.

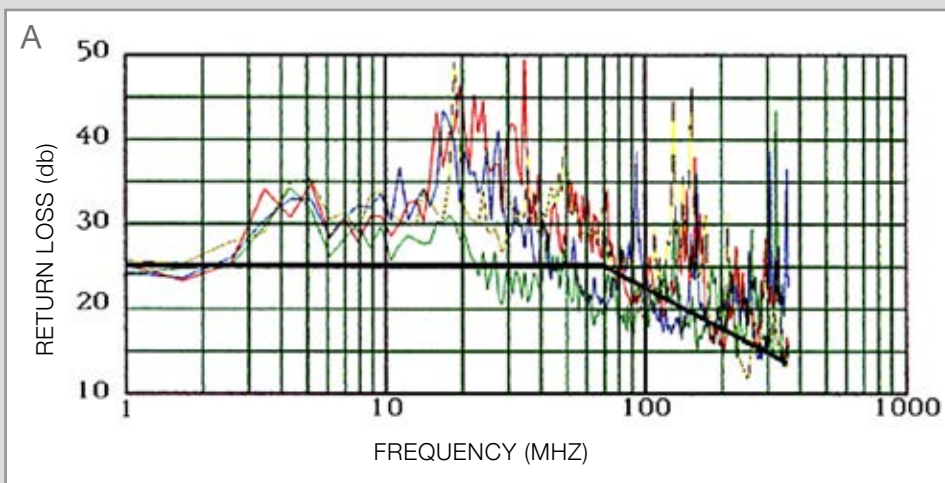
The cable, one of the least expensive parts of the network, can and does have an enormous impact on system response time. The key to success is measured with a cable cost to performance ratio that always makes the Quabbin® user a winner. Not only is DataMax® patch cable proven to deliver fully compliant operational characteristics, it's so good it can enhance the overall performance of a subpar channel as shown below.

AN INEXPENSIVE YET EFFECTIVE FIX

Chart A below illustrates the actual return loss noise in a "problem channel." Notice that it barely meets the required minimum performance for Category 5e. There is very little performance margin/headroom.

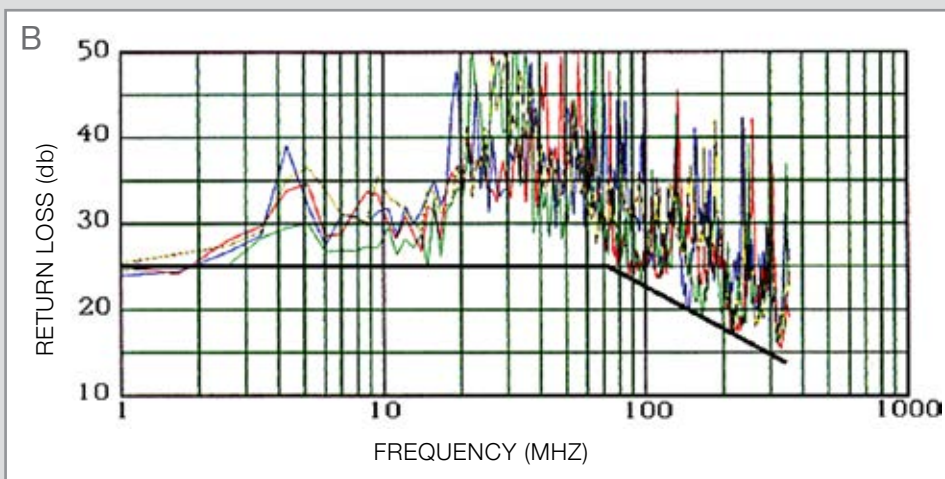
Chart B below illustrates the same channel after simply replacing the patch cables with high quality DataMax® cords. The wall plates, patch panels, horizontal

cabling and other components were unchanged. Since any enhancement or decline in channel component performance is cumulative, the improvement in patch cable performance translates into a 4-6 dB increase in return loss headroom for the entire channel. A borderline network has been converted to a healthy one with an inexpensive yet effective fix.



Problem Channel

Return loss noise barely meets the required minimum performance for Category 5e. There is very little performance margin/headroom.

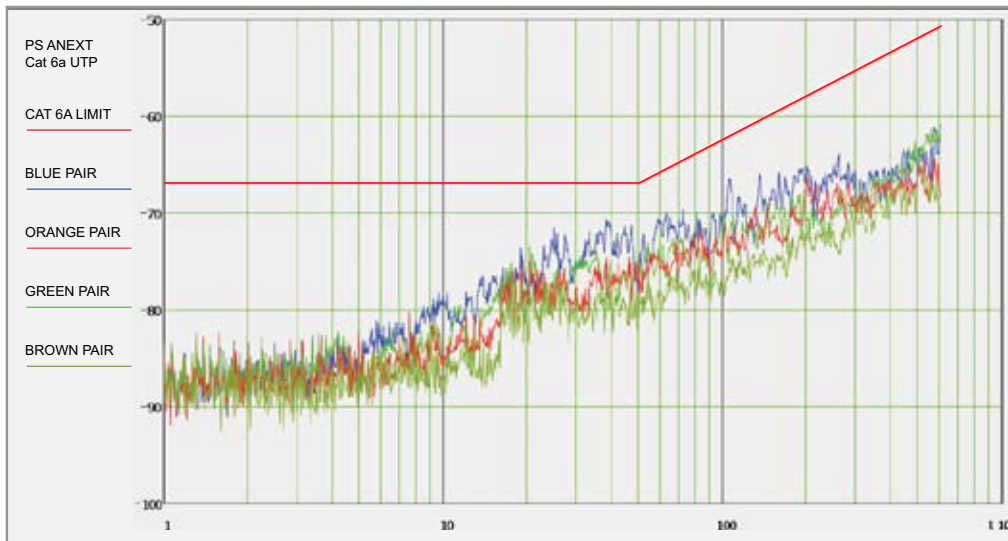


Channel after patch cables replaced with DataMax®

The same channel after simply replacing the patch cables with high quality DataMax® cords — resulting in an increase in return loss headroom for the entire channel. A borderline network has been converted to a healthy one with an inexpensive yet effective fix.

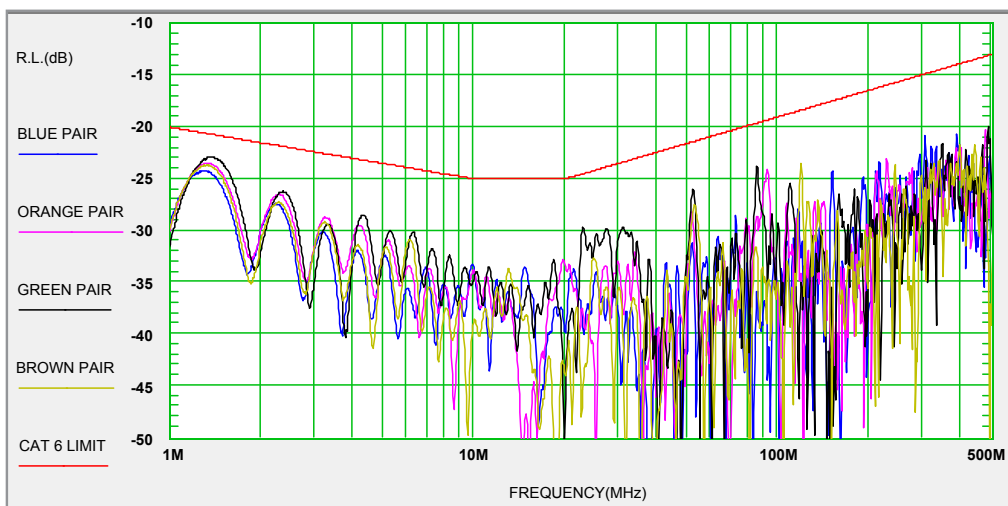
The future is here and a good patch cord still matters.

As data rates have increased over time so has the frequency at which the data is transmitted. Transmission frequency increases cause the cable to become more susceptible to noise. DataMax® patch cable is designed to mitigate noise and maximize performance all while remaining small and flexible, resulting in an optimized cable.



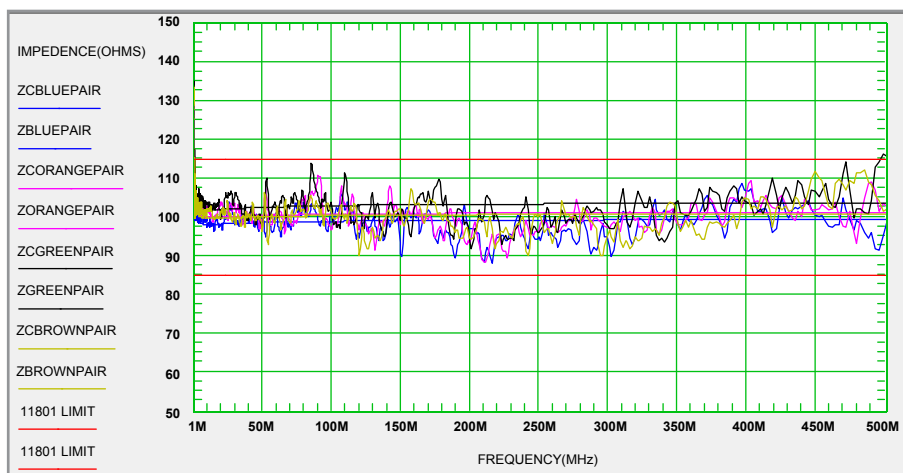
ANEXT

The unique construction of Datamax® 6a resists electrical noise trying to couple from one pair of wires to another within a multi-pair cable. Notice how the crosstalk levels of the various cable pairs do not touch the red limit line. This is optimum and demonstrates that any crosstalk present in the cable is too small to affect transmissions.



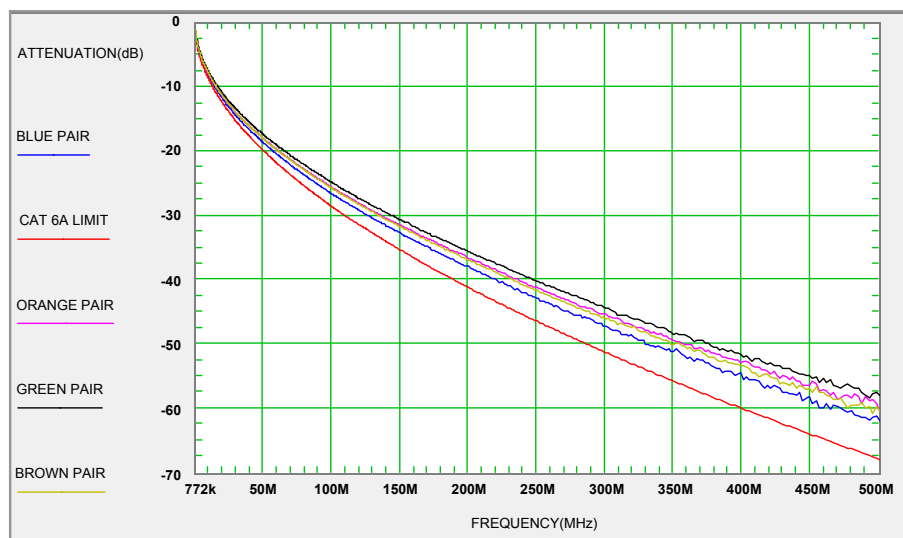
RETURN LOSS

Test results show superior performance which means impedance variations that distort high speed transmissions are minimal, resulting in optimized signal strength and clarity.



IMPEDANCE

The key to a precision data cable is stable impedance (see return loss graph). The impedance chart to the left shows both an upper and lower limit line depicting high and low impedance. The trick is to design a cable with impedance stable enough to plot right between the two limit lines. Not an easy feat — but as shown — the DataMax® 10Gig product is a fabulous success.



ATTENUATION

(Insertion Loss) in this case measures the change in signal strength over the length of the cable. The signal at the far end must be strong enough for the receiver to distinguish it. If not, retransmissions are required which gives the user the impression that the network is slow. As seen in the graph, the signals of the pairs are much stronger than the limit line requires for success on the first transmission.

Installation

When it comes to patch cable, flexibility can mean many different things. The first and most obvious is the ease with which it bends. The importance behind having a pliable patch cord has to do with installation and in-cabinet routing. Flexibility allows easy manipulation

between wall outlets and patch panels while increasing the durability which is important when considering a lifetime of “moves & changes” typical in data centers. Durability is paramount in allowing these changes to take place without compromising the cable.

Round Patch Cable Saves Money and Hassle

Sure round cables look better than bumpy, convoluted or even oval cables. However, there's another reason to use round cable—the bottom line. Patch cable has to be processed and assembled. Quabbin® cables have been designed to be round, smooth and suitable for easy processing in virtually all popular cut & strip

and crimping machines. This equates to maximum throughput, high yields and a short learning curve for assemblers. Secure your throughput and yield while keeping the piece price low by selecting a DataMax® cable designed specifically to contribute to the success of your operation.

Future proofing your connections

Technology is continuously evolving into wireless connectivity; however, conventional wire and cable has not simply disappeared – it has become a critical component of the wireless infrastructure. In addition, performance demands on communication cables have increased with the desire for everything to be faster, smaller, more efficient and “smarter.” Quabbin is dedicated to keeping up with the pace being set; trust us to have the cabling solutions for tomorrow ready for you today.

New DataMax[®] Solutions

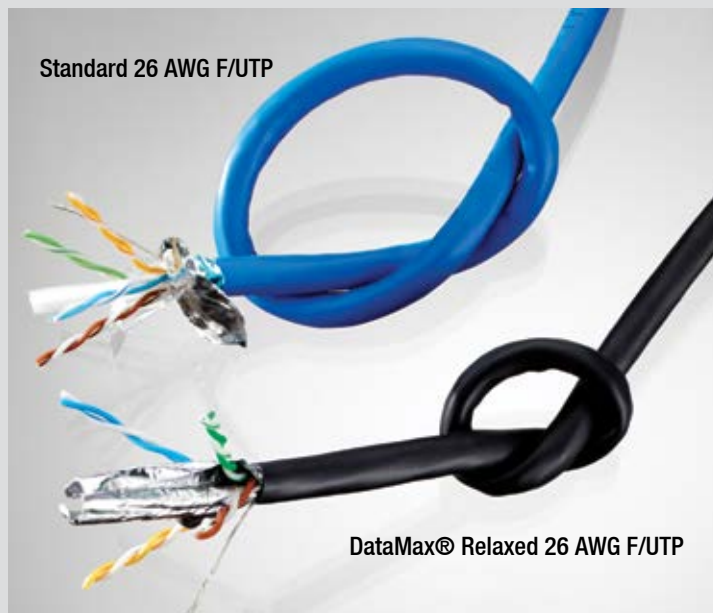
Superior DataMax[®] performance is now available in 3 new designs, offering you the best cable for your application.

Popular Applications

- » Top of Rack
- » Patching Solutions
- » High Density Installations
- » Temperature Sensitive Spaces

Universal Design Features

- » Increased Flexibility
- » Tighter Bend Radius
- » Improved Cable Density
- » Promote Maximum Air Flow



Side by side comparisons of standard 26 AWG F/UTP (blue) and DataMax[®] Relaxed 26 AWG F/UTP (black). Image illustrates the added flexibility and pliability achieved by using the relaxed DataMax[®].

DataMax[®] Relaxed F/UTP

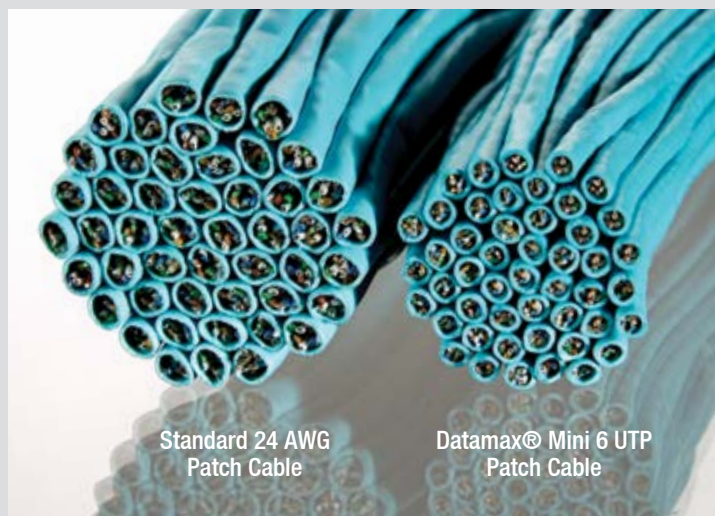
Patch cable the way it should be. 26 AWG F/UTP featuring a more pliable construction using a patented shield engineered to allow the absence of a separator and polyester tape. Fully compliant, DataMax Relaxed meets the TIA-568-C.2 requirements and provides performance of a shielded cable with the size and workability of a UTP cable. See page 18 for more information.

Looking for a shielded cable that has the feel of a UTP cable? This is the choice for you.

- » TIA 568-C.2 Compliant
- » Size and Workability of UTP cable
- » 7% Reduction in Weight (over standard 26 AWG F/UTP)
- » Spline-Free Pliable Design

DataMax® Mini 6 UTP

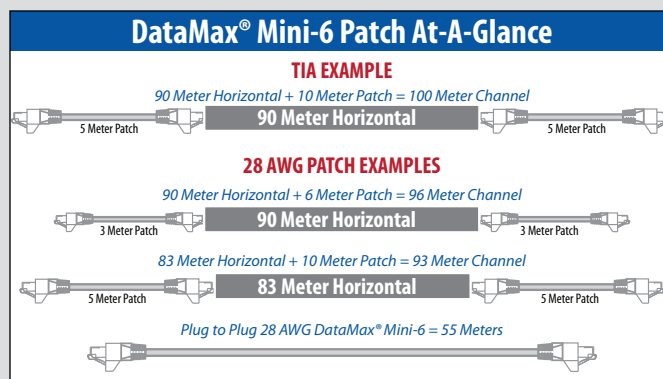
28 AWG reduced diameter profile, meets Category 6 plug-to-plug electrical and transmission parameters up to 55 meters.* See page 17 for more information.



Side by side comparison of 24 AWG and 28 AWG DataMax® Patch cable. DataMax® Mini 6 Patch features a 32% reduction in size as well as a 48% smaller cross sectional area.

The smallest offering in the DataMax® patch cord family of solutions.

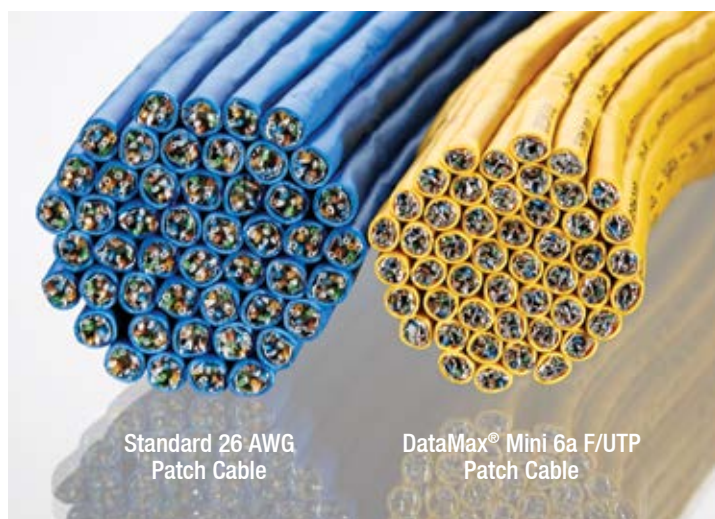
- » Slim 28 AWG Stranded Tinned Copper Design
- » 32% size reduction from standard Cat 6
- » 48% smaller cross sectional area



Examples based on 24 AWG Horizontal cable being used in each channel. TIA example utilizes 24 AWG patch cable.

DataMax® Mini 6a F/UTP

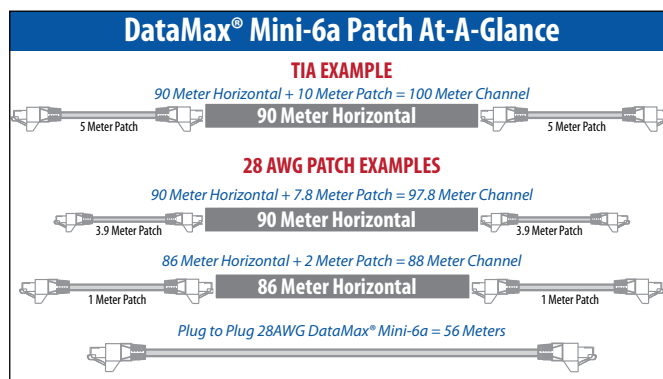
28 AWG reduced diameter profile, featuring a patented shield which eliminates the need for a spline. Meets Category 6a plug-to-plug electrical and transmission parameters up to 56 meters.* See page 20 for more information.



Side by side comparison of 26 AWG and 28 AWG DataMax® Patch cable. DataMax® Mini 6a Patch features a 23% reduction in size, a 38% smaller cross sectional area as well as a 33% difference in weight.

This cable is the solution for anyone seeking a smaller, more flexible shielded cable.

- » When compared to the standard shielded 26 AWG F/UTP, it yields a 23% reduction in size, 38% smaller cross sectional area, and a 33% difference in weight.



Examples based on 23 AWG Horizontal cable being used in each channel. TIA example utilizes 26 AWG patch cable.

*Not officially recognized by the TIA in the 568.C standard due to smaller gauge copper conductor

Patch Cable

Cat 5 / 26 AWG

- » 26 AWG 7/34 Stranded Tinned
 - » Made in USA
 - » RoHs Compliant
 - » Voltage Rating Max 300V
- » UL AWM Style 2552
 - » Bend Radius 8x OD
 - » Weight = WT./M', Nom., Net
 - » Plug-to-plug maximum length 72m*

Foil Shield

| Part Number | Category | AWG | Jacket | Pair Count | CMR | Temp Max | Temp Min | Weight | Nom. OD | Tested to |
|-------------|----------|-----|--------|------------|-----|----------|----------|-----------|---------|-----------|
| 9604 | 5 | 26 | PVC | 2 | X | 60°C | -20°C | 14.0 lbs. | .170" | 100 MHz |

Compatible Connectors

| Quabbinn P/N | Bel-Stewart Connector |
|--------------|-----------------------|
| 9604 | SS-37200-028 |



**See FAQs pg 21 for explanation*

Representative picture, may not match exact configuration of product.



LEARN MORE
quabbinn.com/comm-5
(800) 368-3311

Patch Cable

Cat 5e / 24 AWG

- » 24 AWG 7/32 Stranded Tinned Copper
- » Made in USA
- » RoHs Compliant

- » Popular colors stocked; check website for inventory
- » Voltage Rating Max 300V
- » Bend Radius 4x OD
- » Weight = WT./M', Nom., Net
- » Plug-to-plug maximum length 90m*

Unshielded

| Part Number | Category | AWG | Jacket | Pair Count | CMX | CM | CMG | CMR | Temp Max | Temp Min | Weight | Nom. OD | Tested to |
|-------------|----------|-----|--------|------------|-----|----|-----|-----|-----------|----------|-----------|---------|-----------|
| 1200-1215 | 5e | 24 | LSZH | 4 | X | | | | 75°C | -20°C | 26.3 lbs. | .223" | 350 MHz |
| 5100-5112 | 5e | 24 | PVC | 1 | | X | X | | 60 & 75°C | -20°C | 7.7 lbs. | .120" | 100 MHz |
| 5200-5212 | 5e | 24 | PVC | 2 | | X | X | | 75°C | -20°C | 13.6 lbs. | .200" | 100 MHz |
| 5500-5515 | 5e | 24 | PVC | 4 | | | X | X | 60 & 75°C | -20°C | 22.2 lbs. | .215" | 350 MHz |

Compatible Connectors

| Quabbin P/N | Bel-Stewart Connector | Sentinel Connector |
|-------------|-----------------------|--------------------|
| 5500-5515 | SS-37000-007 | 106-080800-34 |



*See FAQs pg 21 for explanation

Representative picture, may not match exact configuration of product.



LEARN MORE

quabbin.com/comm-5e
(800) 368-3311

Available in a wide variety of colors — call for availability



Colors shown are a representation only. If you require color matching, please contact us.

Patch Cable

Cat 5e / 26 AWG

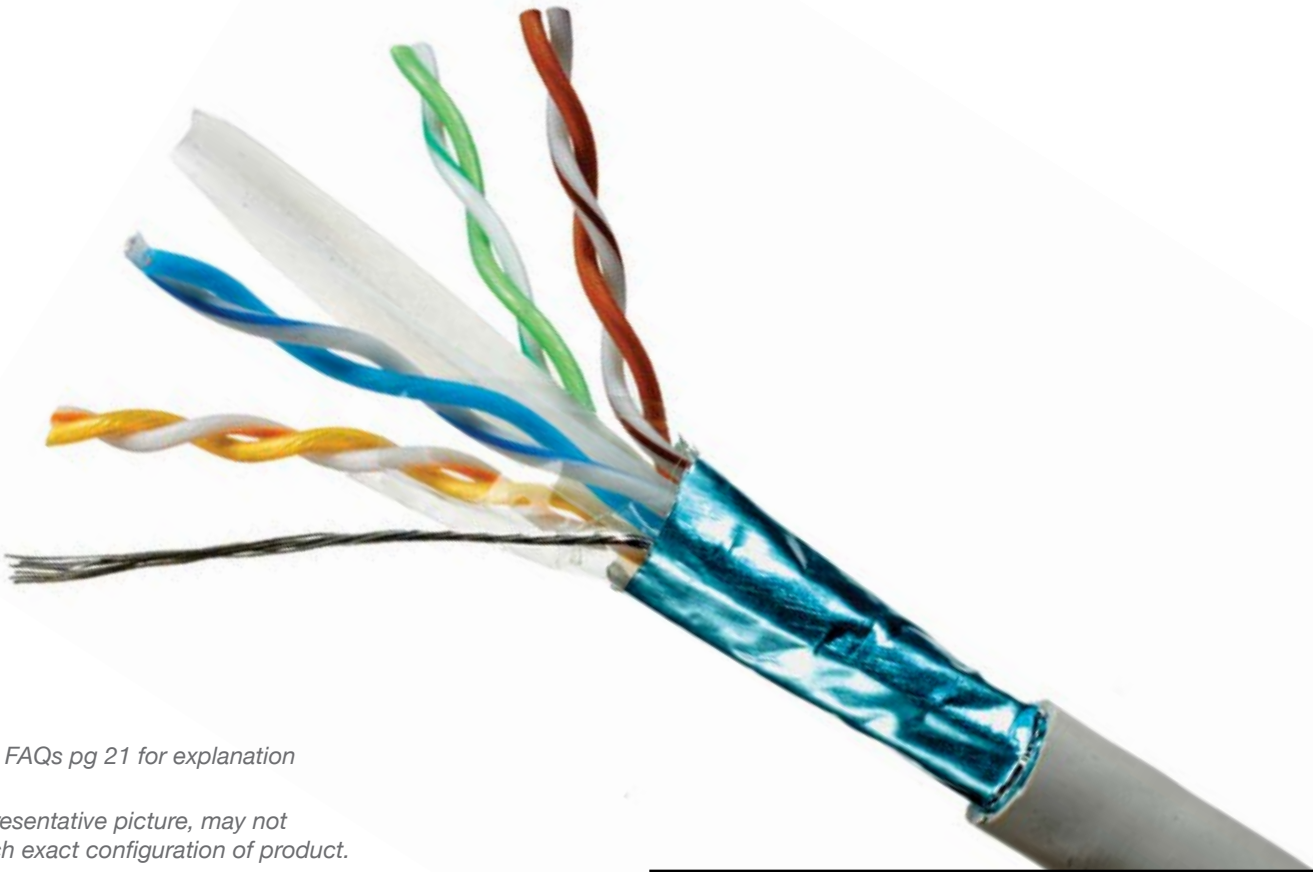
- » 26 AWG 7/34 Stranded Tinned Copper
 » Made in USA
 » RoHs Compliant
 » Voltage Rating Max 300V
- » Popular colors stocked; check website for inventory
 » Bend Radius 8x OD
 » Weight = WT./M', Nom., Net
 » Plug-to-plug maximum length 72m*

Foil Shield

| Part Number | Category | AWG | Jacket | Pair Count | CMX | CM | CMG | CMR | Temp Max | Temp Min | Weight | Nom. OD | Tested to |
|-------------|----------|-----|--------|------------|-----|----|-----|-----|----------|----------|-----------|---------|-----------|
| 2800-2810 | 5e | 26 | LSZH | 4 | X | | | | 75°C | -20°C | 27.3 lbs. | .241" | 100 MHz |
| 2900-2912 | 5e | 26 | PVC | 4 | | | | X | 75°C | -20°C | 21.3 lbs. | .222" | 100 MHz |

Compatible Connectors

| Quabbin P/N | Bel-Stewart Connector | Sentinel Connector |
|-------------|-----------------------|--------------------|
| 2900-2912 | SS-37200-028 | 110S080820-24 |

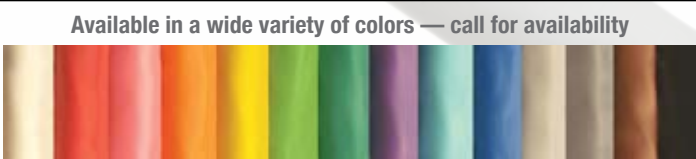


*See FAQs pg 21 for explanation

Representative picture, may not match exact configuration of product.



LEARN MORE
quabbin.com/comm-5e
 (800) 368-3311



Colors shown are a representation only. If you require color matching, please contact us.

Patch Cable

Cat 6 / 24 AWG

- » 24 AWG 7/32 Stranded Tinned Copper
 - » Made in USA
 - » RoHs Compliant
 - » Voltage Rating Max 300V
- » Popular colors stocked; check website for inventory
 - » Bend Radius 4x OD
 - » Weight = WT./M', Nom., Net
 - » Plug-to-plug maximum length 87m*

Unshielded

| Part Number | Category | AWG | Jacket | Pair Count | CMX | CM | CMG | CMR | Temp Max | Temp Min | Weight | Nom. OD | Tested to |
|-------------|----------|-----|--------|------------|-----|----|-----|-----|-----------|----------|-----------|---------|-----------|
| 1300-1312 | 6 | 24 | LSZH | 4 | X | | | | 75°C | -20°C | 27.2 lbs. | .231" | 250 MHz |
| 2200-2215 | 6 | 24 | PVC | 4 | | | X | X | 60 & 75°C | -20°C | 23.7 lbs. | .220" | 600 MHz |
| 2200B-2215B | 6 | 24 | PVC | 4 | | X | X | | 60 & 75°C | -20°C | 22.2 lbs. | .220" | 600 MHz |

Compatible Connectors

| Quabbin P/N | Bel-Stewart Connector | Sentinel Connector |
|-------------|-----------------------|--|
| 2200-2215 | SS-39100-021 | 111-08080054L34 111-08080062L34 111-08080063L34 112-080800-34 |



*See FAQs pg 21 for explanation

Representative picture, may not match exact configuration of product.



LEARN MORE
quabbin.com/comm-6
(800) 368-3311

Available in a wide variety of colors — call for availability

Colors shown are a representation only. If you require color matching, please contact us.

Patch Cable

Cat 6 / 26 AWG

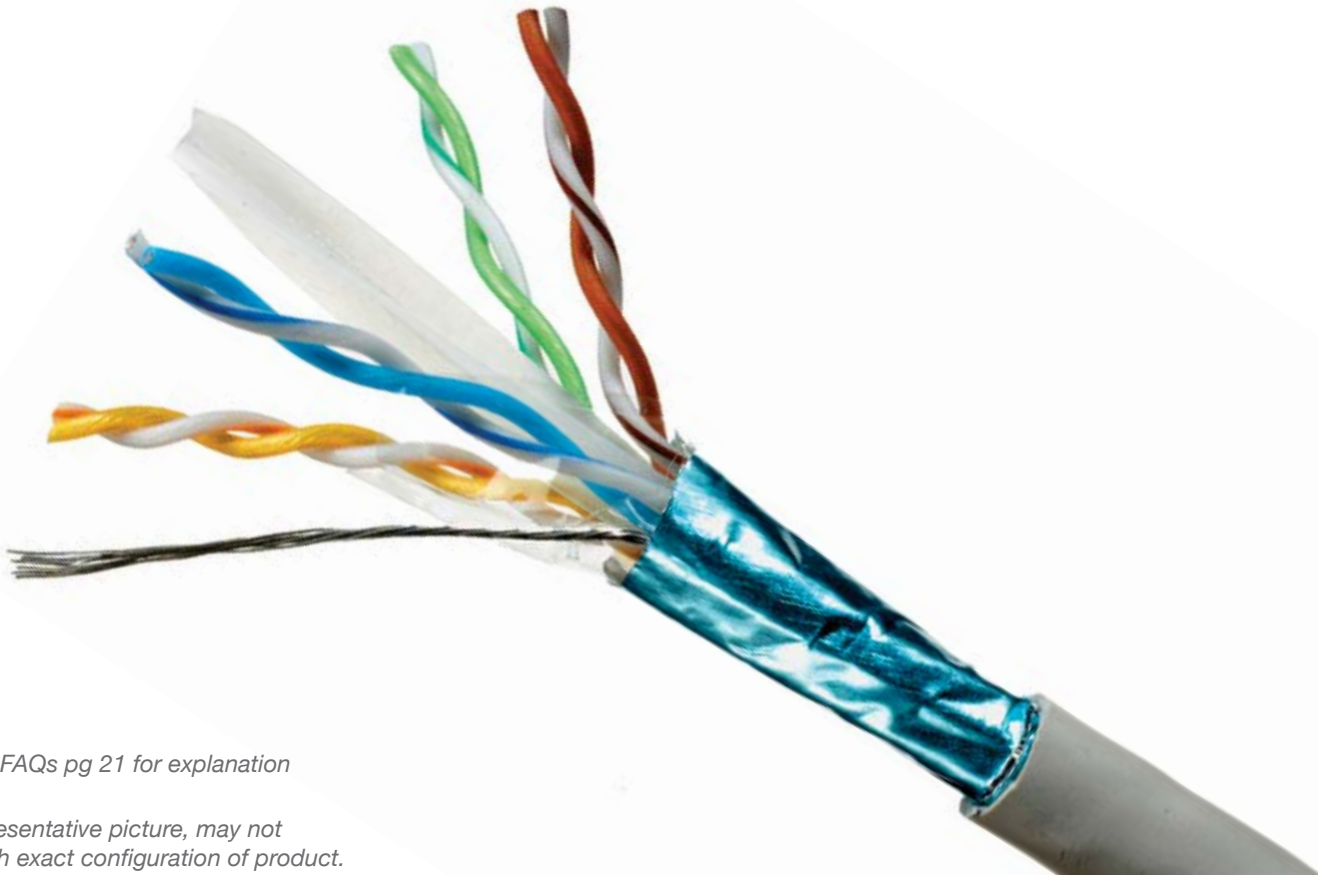
- » 26 AWG 7/34 Stranded Tinned Copper
 - » Made in USA
 - » RoHs Compliant
 - » Voltage Rating Max 300V
- » Popular colors stocked; check website for inventory
 - » Bend Radius 8x OD
 - » Weight = WT./M', Nom., Net
 - » Plug-to-plug maximum length 72m*

Foil Shield

| Part Number | Category | AWG | Jacket | Pair Count | CMX | CM | CMG | CMR | Temp Max | Temp Min | Weight | Nom. OD | Tested to |
|-------------|----------|-----|--------|------------|-----|----|-----|-----|----------|----------|-----------|---------|-----------|
| 2930-2941 | 6 | 26 | PVC | 4 | | | X | X | 75°C | -20°C | 25.0 lbs. | .235" | 250 MHz |
| 2966- 2977 | 6 | 26 | LSZH | 4 | X | | | | 75°C | -40°C | 30.1 lbs. | .265" | 250 MHz |

Compatible Connectors

| Quabbin P/N | Sentinel Connector |
|-------------|--------------------|
| 2930-2941 | 111S08080054L34 |

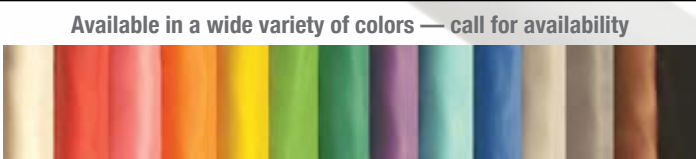


**See FAQs pg 21 for explanation*

Representative picture, may not match exact configuration of product.



LEARN MORE
quabbin.com/comm-6
(800) 368-3311



Available in a wide variety of colors — call for availability

Colors shown are a representation only. If you require color matching, please contact us.

Patch Cable

'Mini' Cat 6 / 28 AWG

- » 28 AWG 7/36 Stranded Tinned Copper
 - » Reduced diameter profile, meets Category 6 plug-to-plug electrical and transmission parameters up to 55 meters.*
 - » Made in USA
 - » RoHs Compliant
- » Popular colors stocked; check website for inventory
 - » Voltage Rating Max 300V
 - » See page 11 for additional DataMax® Mini information
 - » Bend Radius 4x OD
 - » Weight = WT./M', Nom., Net

Unshielded

| Part Number | Category | AWG | Jacket | Pair Count | CMX | CM | CMG | CMR | Temp Max | Temp Min | Weight | Nom. OD | Tested to |
|-------------|----------|-----|--------|------------|-----|----|-----|-----|----------|----------|-----------|---------|-----------|
| 2216-2230 | Mini 6 | 28 | PVC | 4 | | | | X | 75°C | -20 | 10.8 lbs. | .150" | 250 MHz |

Compatible Connectors

| Quabbin P/N | Bel-Stewart Connector | Sentinel Connector |
|-------------|-----------------------|--------------------|
| 2216-2230 | SS-39100-039 | 111-080800B5LA4 |



**Not officially recognized by the TIA in the 568.C standard due to smaller gauge copper conductor*

Representative picture, may not match exact configuration of product.



LEARN MORE
quabbin.com/comm-mini-6
(800) 368-3311

Available in a wide variety of colors — call for availability

Colors shown are a representation only. If you require color matching, please contact us.

Patch Cable

Cat 6a / 26 AWG

- » 26 AWG 7/34 Stranded Tinned Copper
- » Made in USA
- » RoHs Compliant
- » Popular colors stocked, check website for inventory

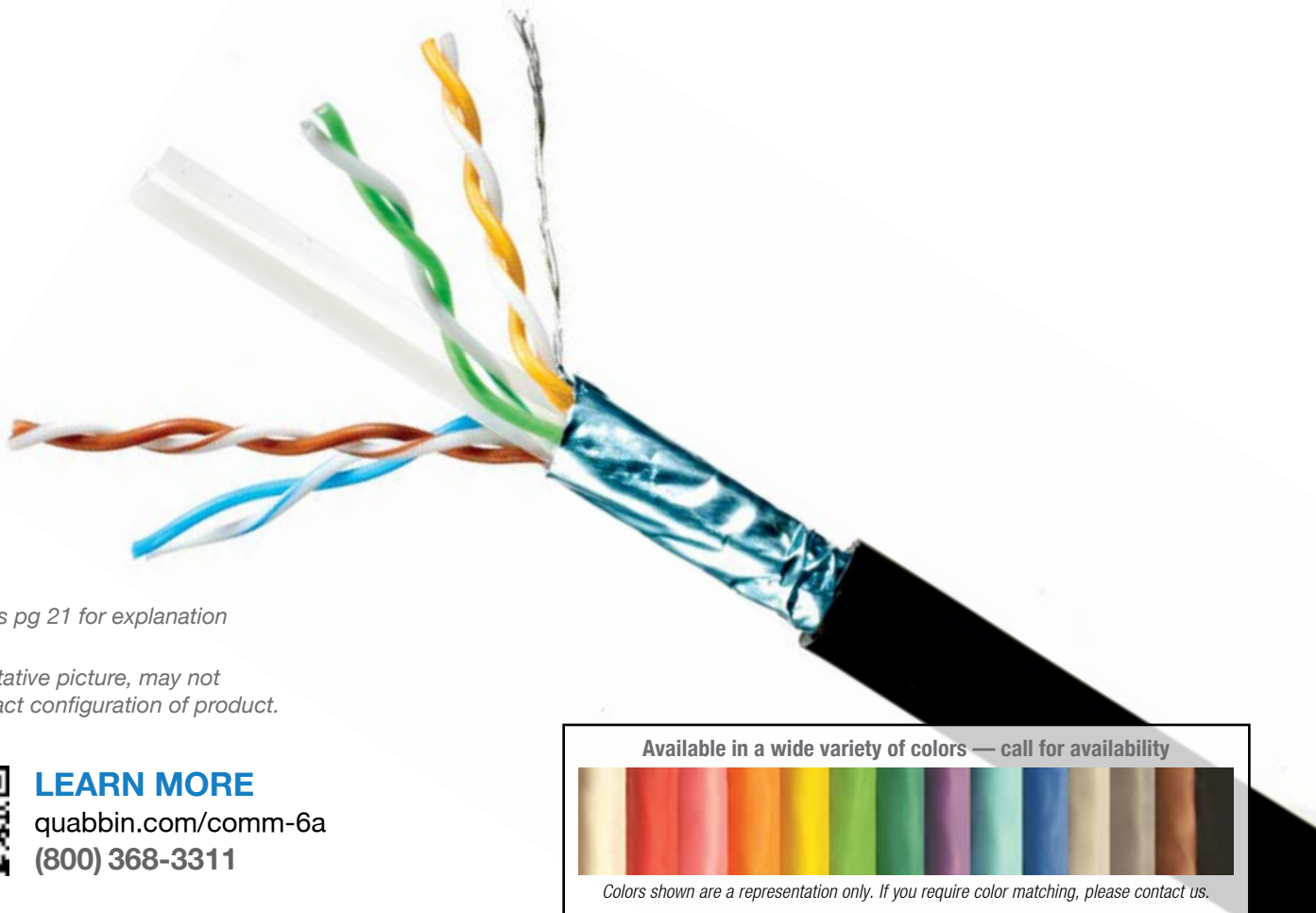
- » Voltage Rating Max 300V
- » See page 10 for additional DataMax® Relaxed information
- » Bend Radius 8x OD
- » Weight = WT./M', Nom., Net
- » Plug-to-plug maximum length 72m*

Foil Shield

| Part Number | Category | AWG | Jacket | Pair Count | CMX | CM | CMG | CMR | Temp Max | Temp Min | Weight | Nom. OD | Tested to |
|--------------------|------------|-----|--------|------------|-----|----|-----|-----|----------|----------|-----------|---------|-----------|
| 2942-2953 and 2991 | 6a | 26 | PVC | 4 | | | X | X | 75°C | -20°C | 25.0 lbs. | .235" | 500 MHz |
| 2978-2989 | 6a | 26 | LSZH | 4 | X | | | | 75°C | -20°C | 30.1 lbs. | .265" | 500 MHz |
| 2246-2259 | Relaxed 6a | 26 | PVC | 4 | | | X | X | 75°C | -20°C | 23.2 lbs. | .228" | 500 MHz |

Compatible Connectors

| Quabbin P/N | Bel-Stewart Connector | Sentinel Connector |
|--------------------|-----------------------|--------------------|
| 2942-2953 and 2991 | SS-39200-011 | 111S08080095LA4 |
| 2246-2258 | SS-39200-036 | |



*See FAQs pg 21 for explanation

Representative picture, may not match exact configuration of product.



LEARN MORE
quabbin.com/comm-6a
 (800) 368-3311

Available in a wide variety of colors — call for availability



Colors shown are a representation only. If you require color matching, please contact us.

Patch Cable

Cat 6a / 26 AWG

- » 26 AWG 7/.0068 Stranded Tinned Copper
 - » Made in USA
 - » RoHs Compliant
 - » Voltage Rating Max 300V
- » Popular colors stocked; check website for inventory
 - » Bend Radius 4x OD
 - » Weight = WT./M', Nom., Net
 - » Plug-to-plug maximum length 72m*

Unshielded

| Part Number | Category | AWG | Jacket | Pair Count | CMX | CM | CMG | CMR | Temp Max | Temp Min | Weight | Nom. OD | Tested to |
|-------------|----------|-----|--------|------------|-----|----|-----|-----|----------|----------|-----------|---------|-----------|
| 2954 -2965 | 6a | 26 | PVC | 4 | | | | X | 75°C | -20°C | 41.1 lbs. | .287" | 500 MHz |

Compatible Connectors

| Quabbin P/N | Bel-Stewart Connector | Sentinel Connector |
|-------------|-----------------------|--------------------|
| 2954-2965 | SS-39100-028 | 111-08080095LA4 |



*See FAQs pg 21 for explanation

Representative picture, may not match exact configuration of product.

 **LEARN MORE**
quabbin.com/comm-6a
(800) 368-3311

Available in a wide variety of colors — call for availability



Colors shown are a representation only. If you require color matching, please contact us.

Patch Cable

‘Mini’ Cat 6a / 28 AWG

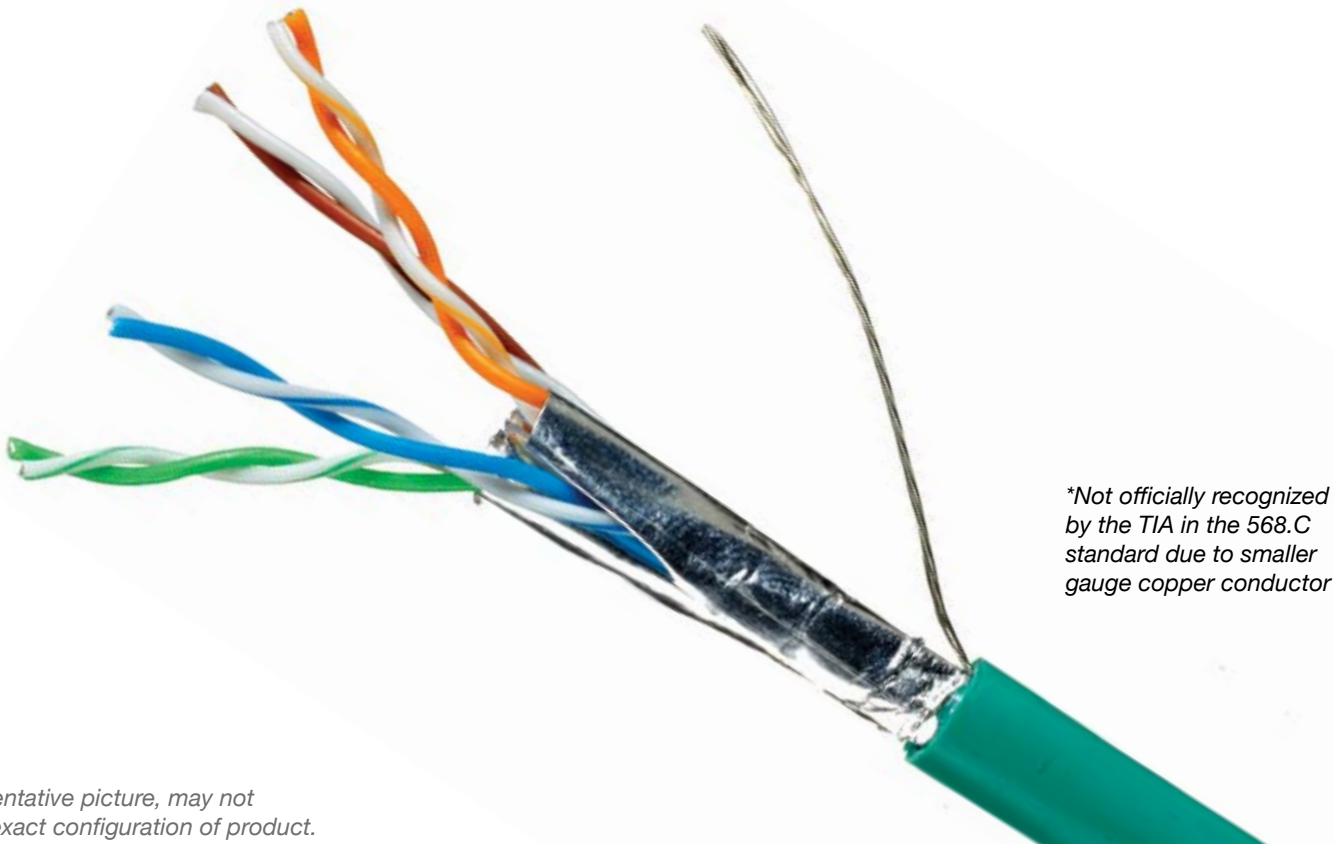
- » All 28 AWG 7/36 Stranded Tinned Copper
 » Reduced diameter profile, featuring a patented shield which eliminates the need for a spline
 » Meets Category 6a plug-to-plug electrical and transmission parameters up to 56 meters*
 » Made in USA
 » RoHs Compliant
- » Popular colors stocked; check website for inventory
 » Voltage Rating Max 300V
 » See page 11 for additional DataMax® Mini information
 » Bend Radius 8x OD
 » Weight = WT./M', Nom., Net

Foil Shield

| Part Number | Category | AWG | Jacket | Pair Count | CMX | CM | CMG | CMR | Temp Max | Temp Min | Weight | Nom. OD | Tested to |
|-------------|----------|-----|--------|------------|-----|----|-----|-----|----------|----------|-----------|---------|-----------|
| 2231-2245 | Mini 6a | 28 | PVC | 4 | | | | X | 75°C | -20°C | 15.2 lbs. | .186" | 500 MHz |

Compatible Connectors

| Quabbin P/N | Bel-Stewart Connector | Sentinel Connector |
|-------------|-----------------------|--------------------|
| 2231-2245 | SS-39200-055 | 111S080800C7LA4 |



**Not officially recognized by the TIA in the 568.C standard due to smaller gauge copper conductor*

Representative picture, may not match exact configuration of product.



LEARN MORE
 quabbin.com/comm-mini-6a
 (800) 368-3311

Available in a wide variety of colors — call for availability

Colors shown are a representation only. If you require color matching, please contact us.

Frequently Asked Questions

What is the minimum bend radius of the cable?

Bend radius is the inside radius of the cable when bent. It is a stationary bend not continuous motion. ANSI/TIA-568-C.2 requires UTP cable to have a minimum bend radius of 4x the cable OD for UTP cable and 8x the cable OD for shielded cable at -20°C. For flat cables, Quabbin lists the bend radius for the smallest dimension.

How long of a patch cord can I use?

The ANSI/TIA-568-C.2 uses a total of 10 meters of patch cable to derive the channel requirements. This includes 90 meters of horizontal cable and 4 plug/jack connections. It is possible to use longer cords in a channel by allocating more insertion loss per meter to the patch cord. For 24 AWG patch cord each additional meter of patch cord would require that 1.2 meters of horizontal be removed. So if you want to use 20 meters of 24 AWG patch cable the maximum horizontal length is 78 meters and the maximum channel length is 98 meters instead of 100 meters. The same is true of 26 AWG patch except that the factor is 1.5 meters of horizontal removed for each additional meter of patch. For 28 AWG the factor is 1.9 meters.

I want to use only patch cable in the channel (no jacks, patch panels or horizontal cable). How long can the cord be?

This has become fairly common. This is listed as the plug-to-plug maximum length on each catalog page. It is determined by comparing the cable performance against the channel specification. When making an assembly for this purpose, it is preferred that the assembly be tested as a channel and as a cord since the channel test would not include the plug. This ensures that the plug is assembled properly.

I want to make assemblies with shielded cable and unshielded plugs. Will it work?

This has become a common practice especially in Cat 6a applications because shielded cable is generally smaller than Cat 6a UTP cable. Based on testing Quabbin has done on cable with the shield floating, we believe the cable will work for a Cat 6a application and meet alien crosstalk requirements. The assembly will not be a shielded assembly, and if it is installed in a shielded channel, it will reduce the effectiveness of the channel shielding by breaking the shield connections.

What does the “R” in the part number printed on the cable mean?

The “R” is to identify the cable as being RoHS compliant. All the cables in this catalog are RoHS compliant. Quabbin will supply RoHS compliance information on request.

Does Quabbin sell assemblies?

No, Quabbin sells bulk cable. Please contact your Quabbin sales representative for an assembler or distributor in your area.

Can I use your category cable for POE applications?

Yes, Quabbin category cable supports all standards based POE systems (POE, POE+ and POE++). The cables are CMX, CM, CMG or CMR, and they support Class 2 applications per the NEC.

Quabbin Commercial Patch Ethernet Cable Quick Reference

| Category | AWG | Pair Count | Foil Shield | Jacket | CM | CMG | CMX | CMR | Temp Max | Temp Min | Weight | Nom OD | Tested To | Page |
|----------|-----|------------|-------------|--------|----|-----|-----|-----|-----------|----------|-----------|--------|-----------|------|
| 5 | 26 | 2 | X | PVC | | | | X | 60°C | -20°C | 14 lbs. | .170" | 100 MHz | 12 |
| 5e | 24 | 4 | | LSZH | | | X | | 75°C | -20°C | 26.3 lbs. | .221" | 350 MHz | 13 |
| 5e | 24 | 1 | | PVC | X | X | | | 60 & 75°C | -20°C | 8.0 lbs. | .120" | 350 MHz | 13 |
| 5e | 24 | 2 | | PVC | X | X | | | 75°C | -20°C | 13.6 lbs. | .200" | 100 MHz | 13 |
| 5e | 24 | 4 | | PVC | | X | | X | 60 & 75°C | -20°C | 22.2 lbs. | .215" | 350 MHz | 13 |
| 5e | 26 | 4 | X | LSZH | | | X | | 75°C | -20°C | 27.3 lbs. | .241" | 100 MHz | 14 |
| 5e | 26 | 4 | X | PVC | X | | | X | 75°C | -20°C | 21.3 lbs. | .222" | 100 MHz | 14 |
| 6 | 24 | 4 | | LSZH | | | X | | 75°C | -20°C | 27.2 lbs. | .231" | 250 MHz | 15 |
| 6 | 24 | 4 | | PVC | | X | | X | 60 & 75°C | -20°C | 23.7 lbs. | .220" | 600 MHz | 15 |
| 6 | 24 | 4 | | PVC | | X | | | 60 & 75°C | -20°C | 22.2 lbs. | .220" | 600 MHz | 15 |
| 6 | 26 | 4 | X | PVC | | X | | X | 75°C | -20°C | 25.0 lbs. | .235" | 250 MHz | 16 |
| 6 | 26 | 4 | X | LSZH | | | X | | 75°C | -40°C | 30.1 lbs. | .265" | 250 MHz | 16 |
| 6 | 28 | 4 | | PVC | | | | X | 75°C | -20°C | 10.8 lbs. | .150" | 250 MHz | 17 |
| 6a | 26 | 4 | X | PVC | | X | | X | 75°C | -20°C | 25.0 lbs. | .235" | 500 MHz | 18 |
| 6a | 26 | 4 | X | LSZH | | | X | | 75°C | -20°C | 30.1 lbs. | .265" | 500 MHz | 18 |
| 6a | 26 | 4 | X | PVC | | X | | X | 75°C | -20°C | 23.2 lbs. | .228" | 500 MHz | 18 |
| 6a | 26 | 4 | | PVC | | | | X | 75°C | -20°C | 41.1 lbs. | .287" | 500 MHz | 19 |
| 6a | 28 | 4 | X | PVC | | | | X | 75°C | -20°C | 15.2 lbs. | .186" | 500 MHz | 20 |

Proudly Made in the USA

- Eliminates overseas shipping times and costly delays
- Locations from coast to coast (MA, IL, FL, TX, CA)

Easy Ordering & Shipping

- Sales representatives located throughout North America
- Inside sales specialists available to answer questions and take your orders
- Orders for in-stock items qualify for same day shipping (Orders must be placed by 2pm EST for same day shipping)

NETWORKS AND CONNECTIONS THAT GO BEYOND OUR CABLES

It is our practice to go above and beyond. For more than 40 years we have been instrumental in helping to shape the future of communication cable. Not only are we members of respected groups and associations of the wire and cable world, but we have had the privilege to participate in standards committees and task groups where we can actively engage in the development of forthcoming cable specifications and products.

Can't find what you are looking for?

Contact Quabbin's Sales Service Department
at 1-800-368-3311 or Sales@quabbin.com



CC-Link IE



In process of requalifying for newest ISO 9001:2015 Standard



Quabbin Wire and Cable Co., Inc., 10 Maple Street, Ware, MA 01082
800.368.3311 • 413.967.6281 • fax 413.967.7564 • www.quabbin.com