

1) CONSTRUCTION:

CONDUCTOR:	24 AWG SOLID BARE COPPER	NOM. DIA.	.0215"
INSULATION:	HIGH DENSITY POLYETHYLENE, .009" NOM. WALL THICKNESS		.039"
PAIRS:	COLOR CODED SINGLES TWISTED INTO PAIRS		.078"
CABLE:	(4) TWISTED PAIRS TWISTED TOGETHER AND WRAPPED WITH AN OVERALL CLEAR POLYESTER TAPE TO FORM A CABLE CORE		.174"
JACKET:	THERMOPLASTIC ELASTOMER, TEAL, .033" NOM. WALL THICKNESS (PRESSURE)	OVERALL CABLE DIAMETER	.240" ± .010"

2) PHYSICAL PROPERTIES:

TEMPERATURE RATING, MAX.	75°C, 80°C (JACKET 105°C, 75°C OIL)
TEMPERATURE RATING, MIN.	-40°C
WT./M', NOM., NET.	27.6 LBS.
JACKET IS SUNLIGHT RESISTANT	PER UL 2556
JACKET IS WELD SPATTER RESISTANT	
JACKET IS CUTTING/MACHINING OIL RESISTANT (PER QUABBIN TEST REPORT #TR 08-0001) (6 MONTHS @ 20°C)	
TENSILE STRENGTH RETENTION, NOM.	80%
ELONGATION RETENTION, NOM.	100%

3) ELECTRICAL CHARACTERISTICS:  
SEE PAGE 2

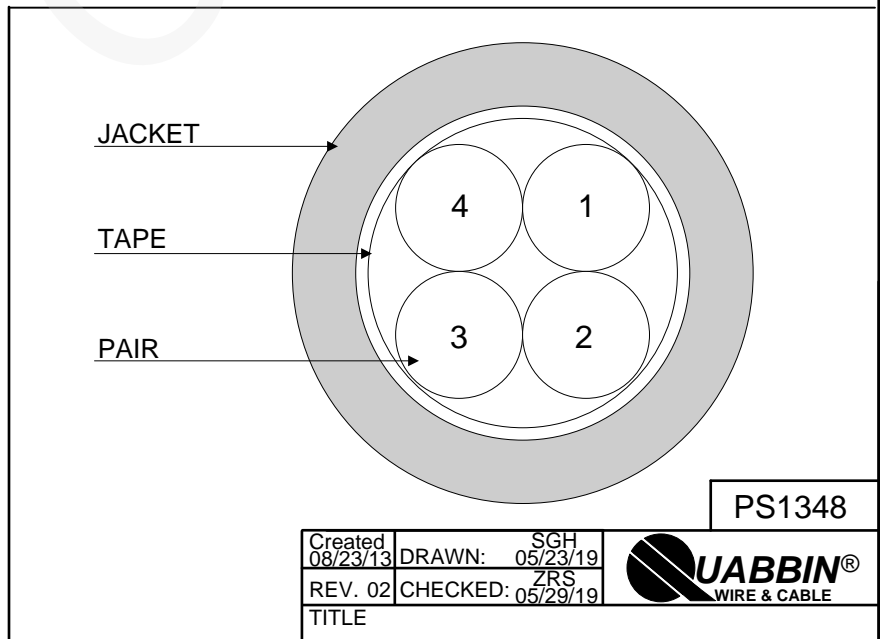
4) AGENCY APPROVALS:  
UL AWM STYLE 2463 (80C 600V)  
NEC (UL) TYPE CM  
CEC C(UL) TYPE CM  
EU CE MARK: MEETS EU DIRECTIVE 2011/65/EU (RoHS II)

5) APPLICATION:  
HORIZONTAL CABLE FOR INDUSTRIAL ETHERNET CAT 5e APPLICATIONS.

6) PRINT:  
QUABBIN DATAMAX EXTREME DURABLE INDUSTRIAL ETHERNET/IP COMPLIANT CAT 5e U/UTP HORIZONTAL P/N 9415 -- C(UL)US TYPE CM 4PR 24 AWG 75C SUN RES OR AWM 2463 80C 600V -- CE RoHS -- **(LOT DESIGNATOR)**  
**(SEQUENTIAL FOOTAGE)**

7) COLOR CODE:  
1. WHITE/BLUE X BLUE  
2. WHITE/ORANGE X ORANGE  
3. WHITE/GREEN X GREEN  
4. WHITE/BROWN X BROWN

8) PACKAGING:  
TO BE PACKAGED AS PER QWC'S STANDARD PACKAGING



PS1348

Created 08/23/13	DRAWN: SGH 05/23/19	
REV. 02	CHECKED: ZRS 05/29/19	
TITLE DATAMAX EXTREME INDUSTRIAL ETHERNET/IP CABLE -- 4 PR -- TYPE CM, STYLE 2463 -- CAT 5e		
QUABBIN P/N	9415	1 of 2

CUSTOMER APPROVAL: \_\_\_\_\_ DATE: \_\_\_\_\_


3) ELECTRICAL CHARACTERISTICS:

POE COMPLIANT TO 100 METERS WHEN INSTALLED PER RECOMMENDATIONS IN TIA TSB-184  
 CABLE WILL MEET CAT 5e CHANNEL REQUIREMENTS TO 100 METER LENGTH  
 CAPACITANCE, MUTUAL, NOM. 13.5 PF/FT. AT 1 MHz  
 DIELECTRIC WITHSTANDING, MIN. 2000V RMS  
 VOLTAGE RATING, MAX. 600V  
 D.C. RESISTANCE, MAX. 26.2 Ω/1,000' (9.38 Ω/100m)

**NOTE:** TESTING FOR THE FOLLOWING IS CONDUCTED OFF THE REEL. (FOR 100m OF CABLE)

IMPEDANCE	100 ± 15 Ω 1 - 100 MHz	
RETURN LOSS	1 ≤ f < 10 MHz	20 + 5 LOG(f) dB MIN
	10 ≤ f < 20 MHz	25 dB MIN
	20 ≤ f ≤ 100 MHz	25 - 7 LOG(f/20) dB MIN
PSNEXT	1 ≤ f ≤ 100 MHz	32.3 - 15 LOG(f/100) dB MIN
NEXT	1 ≤ f ≤ 100 MHz	35.3 - 15 LOG(f/100) dB MIN
PSACRF	1 ≤ f ≤ 100 MHz	20.8 - 20 LOG(f/100) dB MIN
ACRF	1 ≤ f ≤ 100 MHz	23.8 - 20 LOG(f/100) dB MIN
INSERTION LOSS	1 ≤ f ≤ 100 MHz	1.967 √f + 0.023(f) + 0.050/√f dB MAX
DELAY	1 ≤ f ≤ 100 MHz	534 + 36/√f ns MAX
DELAY SKEW	1 ≤ f ≤ 100 MHz	<25 ns

PS1348

Created 08/23/13	DRAWN: SGH 05/23/19	
REV. 02	CHECKED: ZRS 05/29/19	
TITLE		
DATAMAX EXTREME INDUSTRIAL ETHERNET/IP CABLE -- 4 PR -- TYPE CM, STYLE 2463 -- CAT 5e		
QUABBIN P/N	9415	2 of 2

CUSTOMER APPROVAL:

DATE: