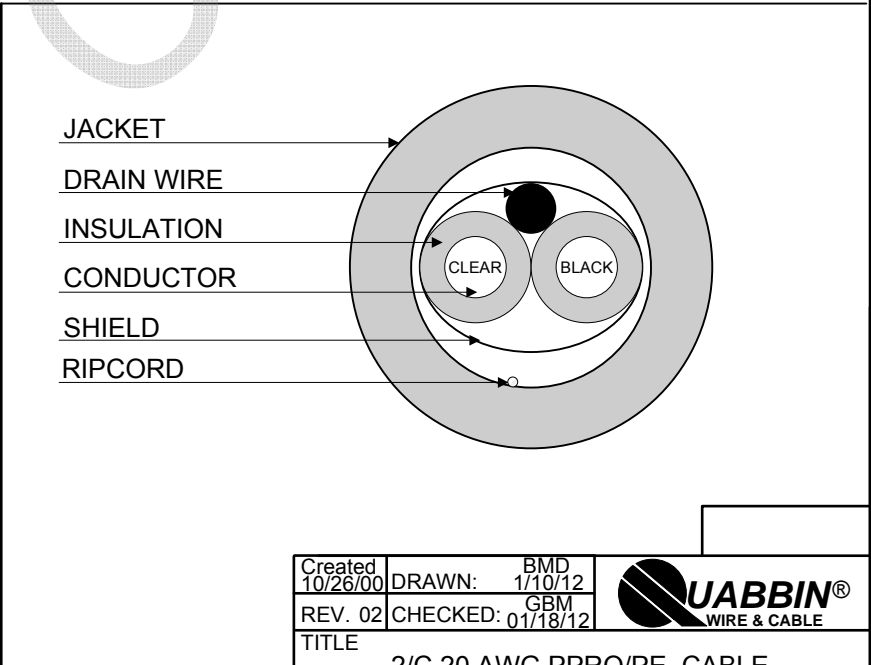


- 1) CONSTRUCTION:
- | | | | |
|-------------|---|------------------------|-------|
| CONDUCTOR: | 20 AWG SOLID TINNED COPPER | NOM. DIA. | .032" |
| INSULATION: | POLYPROPYLENE, .013" NOM. WALL THICKNESS | | .058" |
| CABLE: | COLOR CODED SINGLES SHALL BE TWISTED TOGETHER WITH AN ALUMINUM POLYESTER FOIL SHIELD (FOIL IN, 100% COVERAGE) AND SHALL INCLUDE A 22 AWG SOLID TINNED COPPER DRAIN WIRE IN CONTACT WITH THE METALIZED SURFACE FOR EASY TERMINATION. | | .119" |
| RIPCORD: | INCLUDED UNDER JACKET FOR STRIPPING | | |
| JACKET: | HIGH DENSITY POLYETHYLENE, BLACK, .035" NOM. WALL THICKNESS | OVERALL CABLE DIAMETER | .189" |
- 2) PHYSICAL PROPERTIES:
- | | |
|--------------------------|-----------|
| TEMPERATURE RATING, MAX. | 60°C |
| WT./M', NOM., NET. | 17.1 LBS. |
- 3) ELECTRICAL CHARACTERISTICS:
- | | |
|------------------------------|---------------------------------------|
| CAPACITANCE, MUTUAL, NOM. | 25 PF/FT |
| CAPACITANCE, GROUNDED, NOM. | 46 PF/FT |
| DIELECTRIC WITHSTANDING, MIN | 1500V RMS |
| VOLTAGE RATING, MAX. | 350V (MANUFACTURERS SUGGESTED RATING) |
| D.C. RESISTANCE, MAX. | 10.7 Ω/1000' |
- 4) AGENCY APPROVALS:
- 5) APPLICATION:
DIRECT BURIAL CABLE. RoHS COMPLIANT MATERIALS.
- 6) PRINT:
- 7) COLOR CODE:
1. CLEAR
2. BLACK
- 8) PACKAGING:
TO BE PACKAGED AS PER QWC'S STANDARD PACKAGING



CUSTOMER APPROVAL: _____ DATE: _____

Created 10/26/00	DRAWN: BMD 1/10/12	
REV. 02	CHECKED: GBM 01/18/12	
TITLE 2/C 20 AWG PPRO/PE CABLE -- DIRECT BURIAL		
QUABBIN P/N	6183	1 of 1