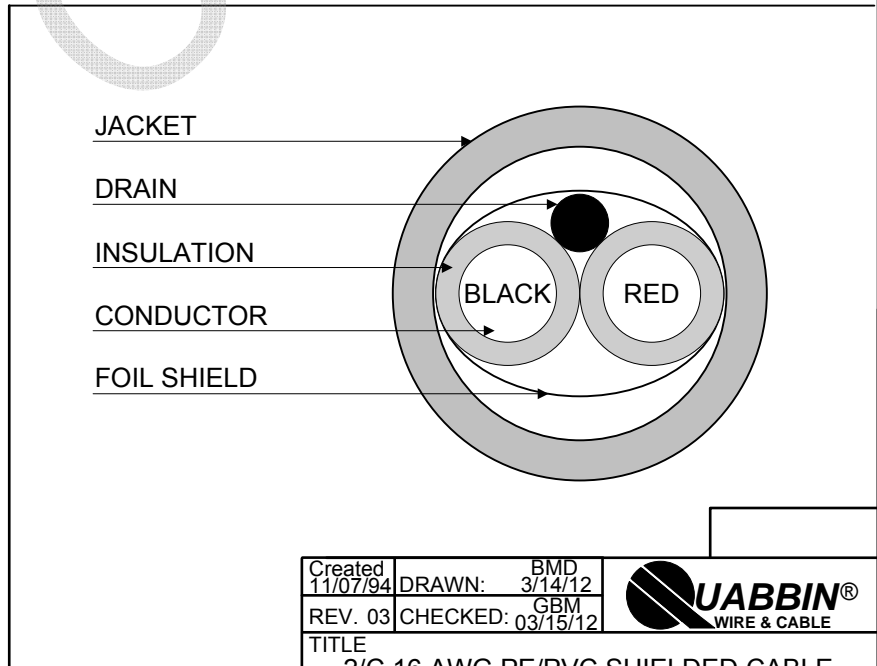


- 1) CONSTRUCTION:
- | | | | |
|-------------|---|------------------------|--------|
| CONDUCTOR: | 16 AWG SOLID BARE COPPER | NOM. DIA. | .0508" |
| INSULATION: | HIGH DENSITY POLYETHYLENE, .012" NOM. WALL THICKNESS | | .075" |
| CABLE: | (2) COLOR CODED SINGLES TWISTED TOGETHER TO FORM A CABLE CORE. | | .150" |
| SHIELD: | AN ALUMINIZED POLYESTER FOIL SHIELD (FOIL IN, 100% COVERAGE) SHALL BE APPLIED OVER THE CABLE CORE AND SHALL CONTAIN A 22 AWG 7/30 STRANDED TINNED COPPER DRAIN WIRE IN CONTACT WITH THE METALIZED SURFACE FOR EASY TERMINATION. | | .153" |
| JACKET: | POLYVINYLCHLORIDE, RED, .021" NOM. WALL THICKNESS | OVERALL CABLE DIAMETER | .195" |
- 2) PHYSICAL PROPERTIES:
- | | |
|--------------------------|-----------|
| TEMPERATURE RATING, MAX. | 60°C |
| WT./M', NOM., NET. | 28.0 LBS. |
- 3) ELECTRICAL CHARACTERISTICS:
- | | |
|-------------------------------------|---------------|
| CAPACITANCE, MUTUAL, NOM. | 35 PF/FT. |
| CAPACITANCE, GROUNDED, NOM. | 64 PF/FT. |
| DIELECTRIC WITHSTANDING, MIN. | 1500V RMS |
| VOLTAGE RATING, MAX. | 300V |
| D.C. RESISTANCE, MAX. PER ASTM B258 | 4.26 Ω/1,000' |
- 4) AGENCY APPROVALS:
 NEC (UL) TYPE CM
 CSA TYPE CMG
- 5) APPLICATION:
 POWER LIMITED FIRE ALARM CABLE OR POWER LIMITED CIRCUIT CABLE. RoHS COMPLIANT MATERIALS.
- 6) PRINT:
 QUABBIN 3150R (UL) TYPE CM 16 AWG SHIELDED -- CSA LL51726 TYPE CMG -- RoHS -- **(LOT DESIGNATOR)**
- 7) COLOR CODE:
 1. BLACK
 2. RED

8) PACKAGING:
 TO BE PACKAGED AS PER QWC'S STANDARD PACKAGING



CUSTOMER APPROVAL:

DATE:

Created 11/07/94	DRAWN: BMD 3/14/12	
REV. 03	CHECKED: GBM 03/15/12	
TITLE 2/C 16 AWG PE/PVC SHIELDED CABLE -- TYPE CM, CSA TYPE CMG		
QUABBIN P/N	3150	1 of 1