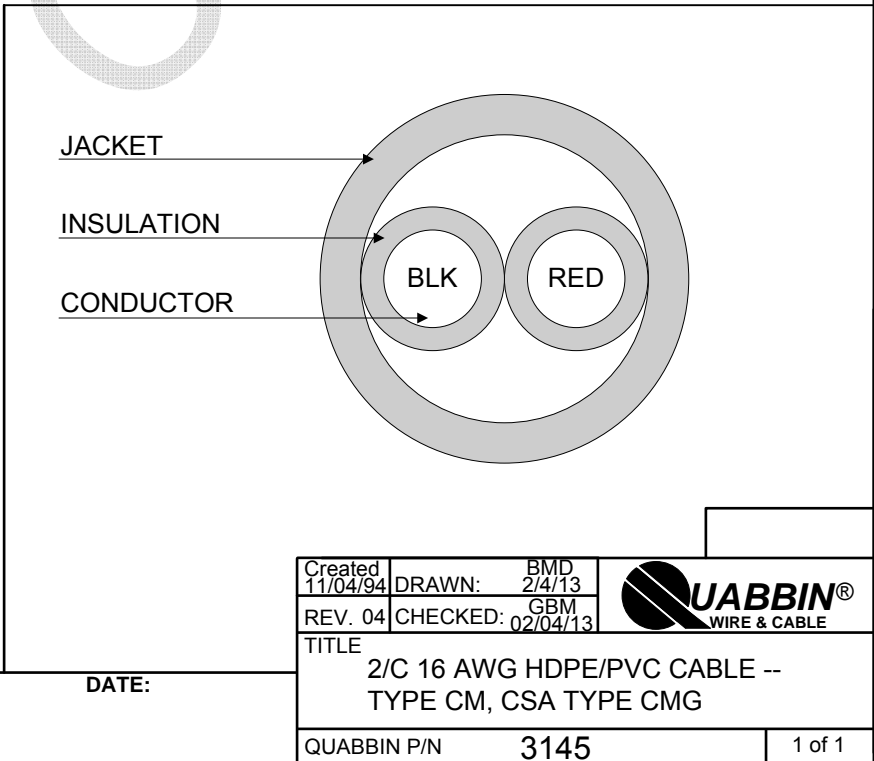


- 1) CONSTRUCTION:
- | | | | |
|-------------|--|-----------|-------|
| CONDUCTOR: | 16 AWG SOLID BARE COPPER | NOM. DIA. | .051" |
| INSULATION: | HIGH DENSITY POLYETHYLENE, .012" NOM. WALL THICKNESS | | .075" |
| CABLE: | (2) COLOR CODED SINGLES TWISTED TOGETHER | | .150" |
| JACKET: | POLYVINYLCHLORIDE, RED, .021" NOM. WALL THICKNESS | | .192" |
| | OVERALL CABLE DIAMETER | | |
- 2) PHYSICAL PROPERTIES:
- | | |
|--------------------------|-----------|
| TEMPERATURE RATING, MAX. | 60°C |
| TEMPERATURE RATING, MIN. | -20°C |
| WT./M', NOM., NET. | 25.1 LBS. |
- 3) ELECTRICAL CHARACTERISTICS:
- | | |
|-------------------------------------|--------------|
| CAPACITANCE, MUTUAL, NOM. | 18 PF/FT. |
| DIELECTRIC WITHSTANDING, MIN. | 1500V RMS |
| VOLTAGE RATING, MAX. | 300V |
| D.C. RESISTANCE, MAX. PER ASTM B258 | 4.26 Ω/1000' |
- 4) AGENCY APPROVALS:
- NEC (UL) TYPE CM
CSA TYPE CMG
- 5) APPLICATION:
- POWER LIMITED FIRE ALARM CABLE OR POWER LIMITED CIRCUIT CABLE. RoHS COMPLIANT MATERIALS.
- 6) PRINT:
- QUABBIN 3145 (UL) TYPE CM 16 AWG -- CSA LL51726 TYPE CMG -- RoHS -- **(LOT DESIGNATOR)**
- 7) COLOR CODE:
1. BLACK
2. RED
- 8) PACKAGING:
- TO BE PACKAGED AS PER QWC'S STANDARD PACKAGING



CUSTOMER APPROVAL:

DATE:

Created 11/04/94	DRAWN: BMD 2/4/13	
REV. 04	CHECKED: GBM 02/04/13	
TITLE 2/C 16 AWG HDPE/PVC CABLE -- TYPE CM, CSA TYPE CMG		
QUABBIN P/N	3145	1 of 1