

1) CONSTRUCTION:

CONDUCTOR:	26 AWG 7/34 STRANDED TINNED COPPER	NOM. DIA.	.019"
INSULATION:	POLYOLEFIN, .009" NOM. WALL THICKNESS		.036"
PAIRS:	COLOR CODED SINGLES TWISTED INTO PAIRS		.072"
CABLE:	(4) TWISTED PAIRS TWISTED TOGETHER WITH A CENTRAL SPLINE AND WRAPPED WITH A CLEAR POLYESTER BINDER TO FORM A CABLE CORE.		.205"
SHIELD:	AN ALUMINIZED POLYESTER FOIL SHIELD (FOIL IN, 100% COVERAGE) WITH A 26 AWG 7/34 STRANDED TINNED COPPER DRAIN WIRE IN CONTACT WITH METALIZED SURFACE SHALL BE APPLIED OVER THE CABLE CORE.		.208"
JACKET:	LOW SMOKE ZERO HALOGEN, (COLOR, PER CHART 1), .032" NOM. WALL THICKNESS	OVERALL CABLE DIAMETER	.265" NOM. .275" MAX. (BY PI TAPE)

2) PHYSICAL PROPERTIES:

TEMPERATURE RATING, MAX.	75°C
TEMPERATURE RATING, MIN.	-20°C
FLAME RATING	VW-1
CORROSIVE GAS	IEC 60754-2
SMOKE EMISSION	IEC 61034-1 & -2
WT./M', NOM., NET.	31.4 LBS.

CHART 1:

QUABBIN P/N	2978	2979	2980	2981	2982	2983	2984	2985	2986	2987	2988	2989
JACKET COLOR	BLACK	BROWN	RED	ORANGE	YELLOW	GREEN	BLUE	VIOLET	GRAY	WHITE	BEIGE	PINK

3) ELECTRICAL CHARACTERISTICS:

SEE PAGE 2

4) AGENCY APPROVALS:

NEC (ETL) TYPE CMX  
CEC C(ETL) TYPE CMX

5) APPLICATION:

SHIELDED FLEXIBLE PATCH/JUMPER CABLE TO SUPPORT SCREENED 568-C.2 CATEGORY 6a APPLICATIONS.  
RoHS COMPLIANT MATERIALS.

6) PRINT: (WHITE INK ON BLACK JACKET, ALL OTHERS BLACK INK)

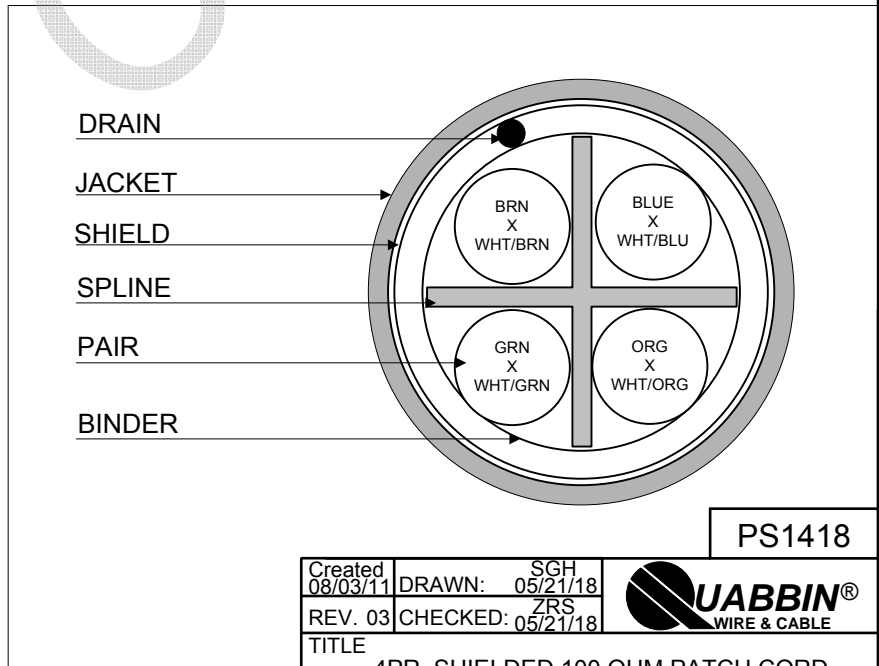
QUABBIN DATAMAX 6a F/UTP 100 OHM PATCH CORD P/N (QWC P/N PER CHART 1) -- LOW SMOKE ZERO HALOGEN TIA-568-C.2 CAT 6a -- C(ETL)US TYPE CMX 75C 26 AWG -- VW-1 -- RoHS -- (LOT DESIGNATOR) (SEQUENTIAL FOOTAGE)

7) COLOR CODE:

1. BLUE X WHITE/BLUE
2. ORANGE X WHITE/ORANGE
3. GREEN X WHITE/GREEN
4. BROWN X WHITE/BROWN

8) PACKAGING:

TO BE PACKAGED AS PER QWC'S STANDARD PACKAGING



PS1418

Created 08/03/11	DRAWN: SGH 05/21/18	
REV. 03	CHECKED: ZRS 05/21/18	
TITLE 4PR. SHIELDED 100 OHM PATCH CORD -- LSZH -- CATEGORY 6a -- TYPE CMX		
DRAWING #	QWC0029	1 of 2

CUSTOMER APPROVAL:

DATE:

3) ELECTRICAL CHARACTERISTICS: (FOR 100m OF CABLE)

CAPACITANCE, MUTUAL, NOM.	13.5 PF/FT. AT 1 MHz	
DIELECTRIC WITHSTANDING, MIN.	1500V RMS	
VOLTAGE RATING, MAX.	300V	
D.C. RESISTANCE, MAX.	14.0 Ω	
IMPEDANCE, NOM.	100 ± 15 Ω 1 - 100 MHz 100 ± 20 Ω 100 - 500 MHz	
RETURN LOSS	$1 \leq f < 10$ MHz 20 + 5 LOG( <i>f</i> ) dB MIN $10 \leq f < 20$ MHz 25 DB MIN $20 \leq f \leq 500$ MHz 25 - 8.6 LOG( <i>f</i> /20) dB MIN	
PS NEXT	$1 \leq f \leq 500$ MHz 42.3 - 15 LOG ( <i>f</i> /100) dB MIN	
NEXT	$1 \leq f \leq 500$ MHz 44.3 - 15 LOG ( <i>f</i> /100) dB MIN	
PS ACRF	$1 \leq f \leq 500$ MHz 24.8 - 20 LOG( <i>f</i> /100) dB MIN	
ACRF	$1 \leq f \leq 500$ MHz 27.8 - 20 LOG( <i>f</i> /100) dB MIN	
INSERTION LOSS	$1 \leq f \leq 500$ MHz $1.5[1.82\sqrt{f} + 0.0091(f) + 0.25/\sqrt{f}]$ dB MAX	
DELAY	$1 \leq f \leq 500$ MHz $534 + 36/\sqrt{f}$ ns MAX	
DELAY SKEW	$1 \leq f \leq 500$ MHz <45 ns	
PS ANEXT LOSS (6 AROUND 1)	$1 \leq f \leq 500$ MHz 62.5 - 15 LOG ( <i>f</i> /100) dB 50 - 500 MHz 67 dB 1 - 50 MHz	
PS AFEXT (6 AROUND 1)	$1 \leq f \leq 500$ MHz 38.2 - 20 LOG( <i>f</i> /100) dB	
VELOCITY OF PROPAGATION	68%	

NOTE: ALL TESTING IS CONDUCTED OFF THE REEL.

PS1418

Created 08/03/11	DRAWN: SGH 05/21/18
REV. 03	CHECKED: ZRS 05/21/18



TITLE  
4PR. SHIELDED 100 OHM PATCH CORD  
-- LSZH -- CATEGORY 6a -- TYPE CMX

CUSTOMER APPROVAL:

DATE:

DRAWING # QWC0029

2 of 2