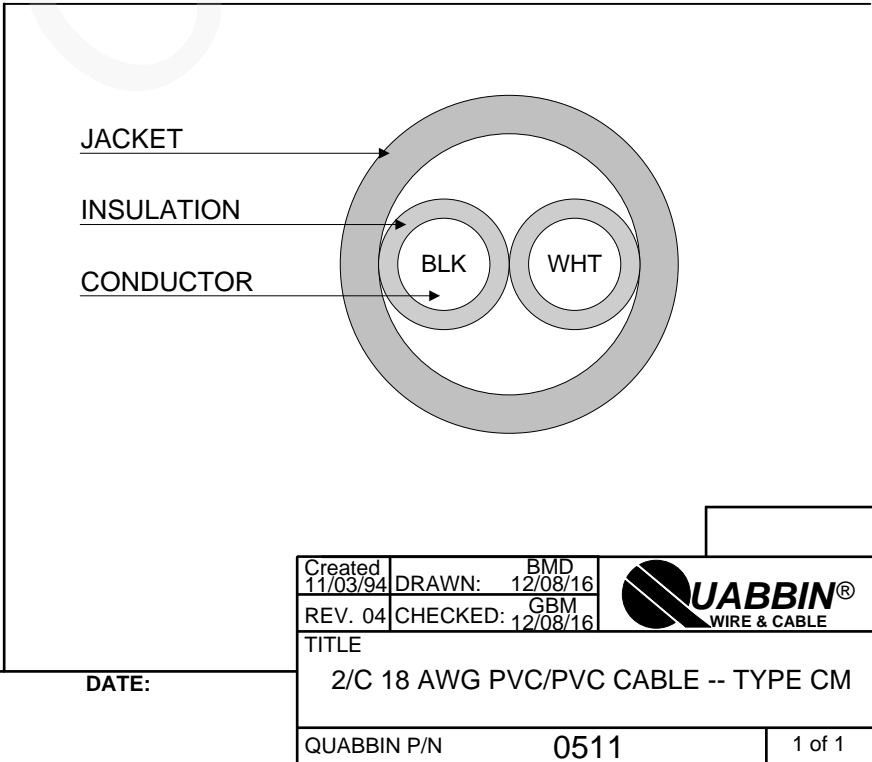


- 1) CONSTRUCTION:
- | | | | |
|-------------|---|------------------------|-------|
| CONDUCTOR: | 18 AWG 7/26 STRANDED TINNED COPPER | NOM. DIA. | .048" |
| INSULATION: | SEMI-RIGID POLYVINYLCHLORIDE, .010" NOM. WALL THICKNESS | | .068" |
| CABLE: | (2) COLOR CODED SINGLES TWISTED TOGETHER TO FORM A CABLE CORE | | .136" |
| JACKET: | POLYVINYLCHLORIDE, CHROME GRAY, .020" NOM. WALL THICKNESS | OVERALL CABLE DIAMETER | .176" |
- 2) PHYSICAL PROPERTIES:
- | | |
|--------------------------|-----------|
| TEMPERATURE RATING, MAX. | 60°C |
| TEMPERATURE RATING, MIN. | -20°C |
| WT./M', NOM., NET. | 19.1 LBS. |
- 3) ELECTRICAL CHARACTERISTICS:
- | | |
|-------------------------------------|--------------|
| CAPACITANCE, MUTUAL @ 1 MHZ | 16 PF/FT. |
| DIELECTRIC WITHSTANDING, MIN. | 1500V RMS |
| VOLTAGE RATING, MAX. | 300V |
| D.C. RESISTANCE, MAX. PER ASTM B286 | 6.54 Ω/1000' |
- 4) AGENCY APPROVALS:
NEC (UL) TYPE CM
- 5) APPLICATION:
INSTRUMENTATION, SOUND, AND BROADCAST CABLE. RoHS COMPLIANT MATERIALS.
- 6) PRINT:
QUABBIN 0511 (UL) TYPE CM 18 AWG – RoHS -- **(LOT DESIGNATOR)**
- 7) COLOR CODE:
1. BLACK
2. WHITE
- 8) PACKAGING:
TO BE PACKAGED AS PER QWC'S STANDARD PACKAGING



CUSTOMER APPROVAL:

DATE:

Created 11/03/94	DRAWN: BMD 12/08/16	
REV. 04	CHECKED: GBM 12/08/16	
TITLE 2/C 18 AWG PVC/PVC CABLE -- TYPE CM		
QUABBIN P/N	0511	1 of 1