

1) CONSTRUCTION:

CONDUCTOR:	22 AWG 7/30 STRANDED TINNED COPPER	NOM. DIA.	.030"
INSULATION:	POLYVINYLCHLORIDE, .016" NOM. WALL THICKNESS		.062"
PAIRS:	NUMBER CODED SINGLES TWISTED INTO PAIRS		.124"
CABLE:	(2) TWISTED PAIRS TWISTED TOGETHER TO FORM A CABLE CORE.		.184"
SHIELD:	AN ALUMINIZED POLYESTER FOIL SHIELD (FOIL OUT, 100% COVERAGE) SHALL BE APPLIED OVER THE CABLE CORE AND SHALL CONTAIN A 24 AWG 7/32 STRANDED TINNED COPPER DRAIN WIRE IN CONTACT WITH THE METALIZED SURFACE FOR EASY TERMINATION.		.187"
JACKET:	POLYVINYLCHLORIDE, CHROME GRAY, .043" NOM. WALL THICKNESS	OVERALL CABLE DIAMETER	.273"

2) PHYSICAL PROPERTIES:

TEMPERATURE RATING, MAX.	80°C, 90°C & 105°C
TEMPERATURE RATING, MIN.	-20°C
WT./M', NOM., NET.	34.9 LBS.
JACKET IS SUNLIGHT RESISTANT	

3) ELECTRICAL CHARACTERISTICS:

CAPACITANCE, MUTUAL, NOM.	33 PF/FT.
CAPACITANCE, GROUNDED, NOM.	56 PF/FT.
DIELECTRIC WITHSTANDING, MIN VOLTAGE RATING, MAX.	2000V RMS 300V
D.C. RESISTANCE, MAX. PER ASTM B286	16.7 Ω/1,000'

4) AGENCY APPROVALS:

- NEC (UL) TYPE PLTC 105C 300V
- NEC (UL) TYPE ITC 105C 300V
- UL AWM STYLE 2464 80C 300V
- CSA FAS 105 FT4
- CSA AWM FT4 90C 300V

5) APPLICATION:

PROCESS SYSTEM INTERCONNECT. POWER LIMITED TRAY CABLE, INSTRUMENTATION TRAY CABLE, CLASS 3 CIRCUITS. RoHS COMPLIANT MATERIALS.

6) PRINT:

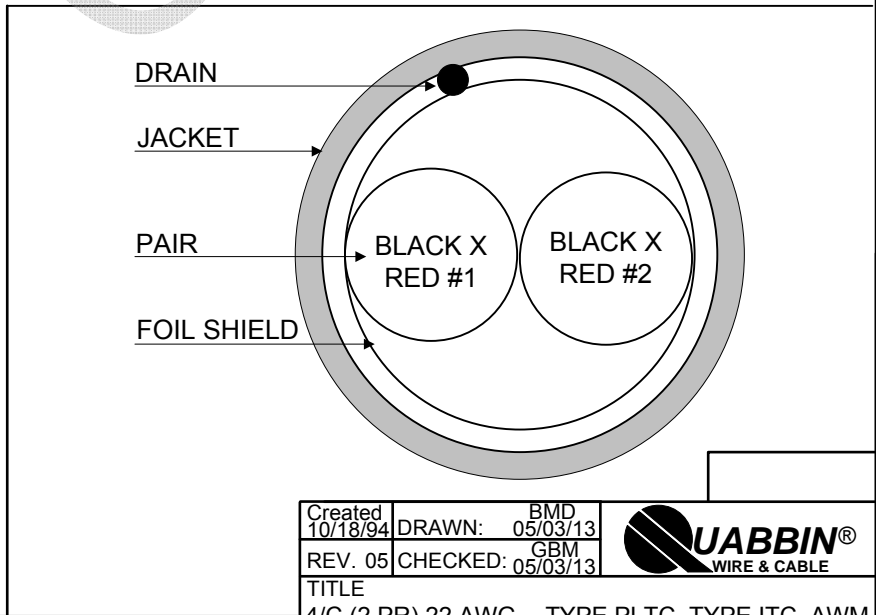
QUABBIN 0240 (UL) TYPE PLTC OR ITC 22 AWG 105C SUN RES OR AWM 2464 -- CSA LL66965 FAS 105 22 AWG 4 CONDUCTOR FT4 OR AWM I/II A/B 90C 300V FT4 -- RoHS -- **(LOT DESIGNATOR)**

7) COLOR CODE:

- BLACK X RED
- PAIRS NUMBERED #1 AND #2
- WHITE INK ON BLACK CONDUCTORS
- BLACK INK ON RED CONDUCTORS

8) PACKAGING:

TO BE PACKAGED AS PER QWC'S STANDARD PACKAGING



CUSTOMER APPROVAL:

DATE:

Created 10/18/94	DRAWN: BMD 05/03/13	
REV. 05	CHECKED: GBM 05/03/13	
TITLE 4/C (2 PR) 22 AWG -- TYPE PLTC, TYPE ITC, AWM 2464 -- CSA FAS, AWM FT4 CABLE -- SHIELDED		
QUABBIN P/N	0240	1 of 1