

1) CONSTRUCTION: NOM. DIA.
 CONDUCTOR: 18 AWG 16/30 STRANDED TINNED COPPER .045"
 INSULATION: POLYVINYLCHLORIDE, .016" NOM. WALL THICKNESS .077"
 CABLE: (3) INSULATED CONDUCTORS TWISTED TOGETHER TO FORM A .166"
 CABLE CORE OVERALL CABLE DIAMETER .242"
 JACKET: POLYVINYLCHLORIDE, CHROME, .038" NOM. WALL THICKNESS

2) PHYSICAL PROPERTIES:
 TEMPERATURE RATING, MAX. 80°C, 90°C & 105°C
 TEMPERATURE RATING, MIN. -20°C
 WT./M', NOM., NET. 37.7 LBS.
 JACKET IS SUNLIGHT RESISTANT

3) ELECTRICAL CHARACTERISTICS:
 CAPACITANCE, MUTUAL, NOM. 25 PF/FT
 DIELECTRIC WITHSTANDING, MIN. 1500V RMS
 VOLTAGE RATING, MAX. 300V
 D.C. RESISTANCE, MAX. 6.7 Ω/1000'

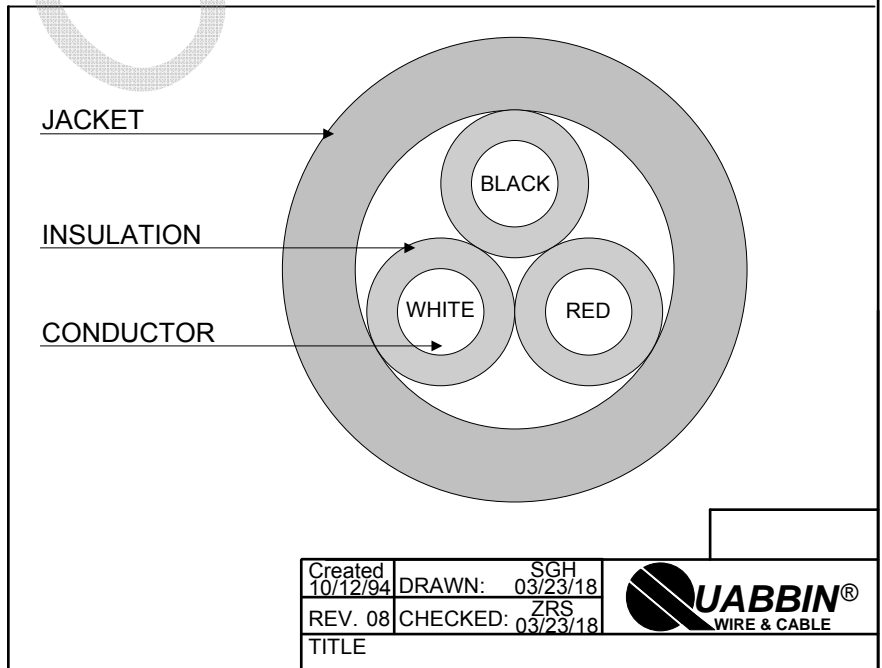
4) AGENCY APPROVALS:
 NEC (UL) TYPE PLTC 105C 300V
 NEC (UL) TYPE ITC 105C 300V
 UL AWM STYLE 2464 80C 300V
 CSA FAS 105 FT4
 CSA AWM FT4 90C 300V

5) APPLICATION:
 PROCESS SYSTEM INTERCONNECT. POWER LIMITED TRAY CABLE, INSTRUMENTATION TRAY CABLE, CLASS 3 CIRCUITS. RoHS COMPLIANT MATERIALS.

6) PRINT:
 QUABBIN 0200 (UL) TYPE PLTC OR ITC 18 AWG 105C SUN RES OR AWM 2464 -- CSA LL66965 FAS 105 18 AWG 3 CONDUCTOR FT4 OR AWM I/II A/B 90C 300V FT4 -- RoHS -- **(LOT DESIGNATOR)**

7) COLOR CODE:
 1. BLACK
 2. RED
 3. WHITE

8) PACKAGING
 TO BE PACKAGED AS PER QWC'S STANDARD PACKAGING



Created 10/12/94	DRAWN: SGH 03/23/18	
REV. 08	CHECKED: ZRS 03/23/18	
TITLE 3/C 18 AWG -- TYPE PLTC, TYPE ITC, AWM 2464, CSA FAS, AWM FT4 CABLE -- UNSHIELDED		
QUABBIN P/N	0200	1 of 1

CUSTOMER APPROVAL: _____ DATE: _____