

1) CONSTRUCTION:

CONDUCTOR:	24 AWG 7/32 STRANDED TINNED COPPER	NOM. DIA.	.024"
INSULATION:	FOAM POLYPROPYLENE, .015" NOM. WALL THICKNESS		.054"
CABLE:	(8) COLOR CODED SINGLES TWISTED TOGETHER TO FORM A CABLE CORE.		.181"
SHIELD:	ALUMINIZED POLYESTER FOIL SHIELD (FOIL OUT, 100% COVERAGE), WITH A 24 AWG STRANDED TINNED COPPER DRAIN WIRE IN CONTACT WITH THE METALIZED SURFACE. A SECOND SHIELD OF 36 AWG TINNED COPPER BRAID (65% COVERAGE) SHALL BE APPLIED OVER THE FOIL SHIELD.		.207"
JACKET:	POLYVINYLCHLORIDE, CHROME GRAY, .035" NOM. WALL THICKNESS	OVERALL CABLE DIAMETER	.277"

2) PHYSICAL PROPERTIES:

TEMPERATURE RATING, MAX.	60°C & 80°C
TEMPERATURE RATING, MIN.	-20°C
WT./M', NOM., NET.	41.9 LBS.

3) ELECTRICAL CHARACTERISTICS:

CAPACITANCE, MUTUAL, NOM.	12 PF/FT.
CAPACITANCE, GROUNDED, NOM.	22 PF/FT.
DIELECTRIC WITHSTANDING, MIN.	1500V RMS
VOLTAGE RATING, MAX.	300V
D.C. RESISTANCE, MAX. PER ASTM B286	26.2 Ω/1000'

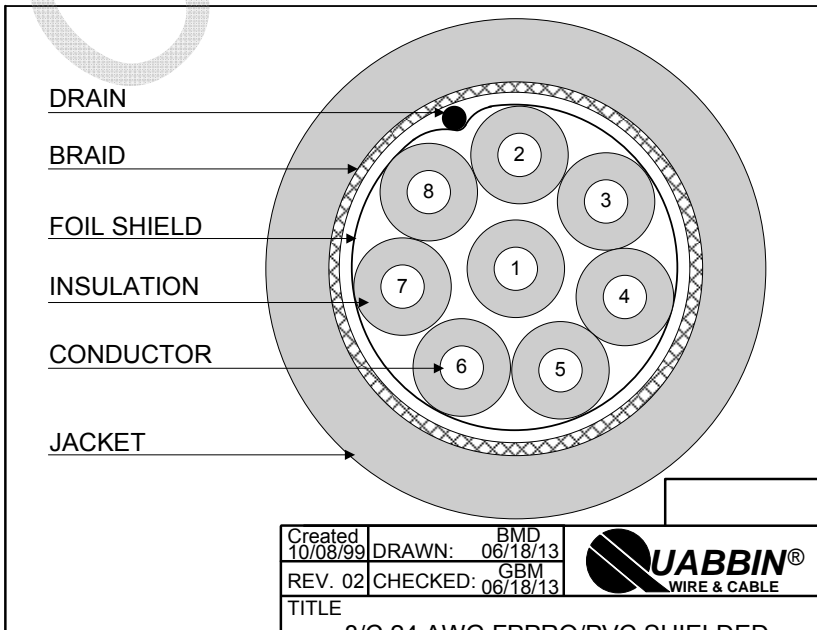
4) AGENCY APPROVALS:
 NEC (UL) TYPE CM
 CEC C(UL) TYPE CM
 (UL) AWM STYLE 2919

5) APPLICATION:
 LOW CAPACITANCE COMPUTER INTERCONNECT, RS-423, RS-232, AND CAD/CAM CABLE.
 RoHS COMPLIANT.

6) PRINT:
 QUABBIN 8668 C(UL)US TYPE CM 24 AWG SHIELDED OR AWM 2919 -- LOW VOLTAGE COMPUTER CABLE --
 RoHS -- **(LOT DESIGNATOR)**

7) COLOR CODE:
 1. BLACK
 2. WHITE
 3. RED
 4. GREEN
 5. BROWN
 6. BLUE
 7. ORANGE
 8. YELLOW

8) PACKAGING:
 TO BE PACKAGED AS PER QWC'S
 STANDARD PACKAGING



CUSTOMER APPROVAL:

DATE:

Created 10/08/99	DRAWN: BMD 06/18/13
REV. 02	CHECKED: GBM 06/18/13



TITLE	8/C 24 AWG FPPRO/PVC SHIELDED CABLE -- TYPE CM, STYLE 2919
DRAWING#	8668
	1 of 1